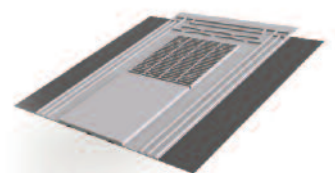
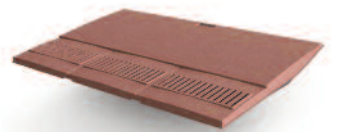
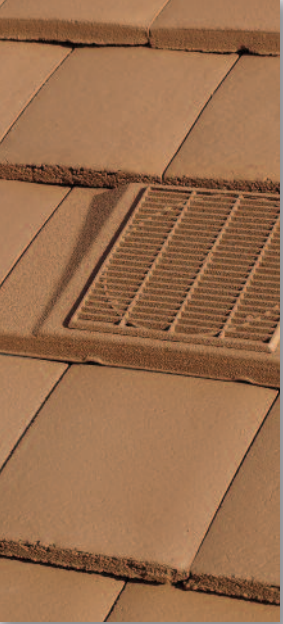


**UNIVERSAL IN-LINE TILE & SLATE VENTILATOR RANGE**



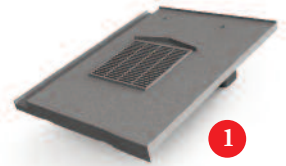


## UNIVERSAL IN-LINE TILE & SLATE VENTILATOR RANGE

Glidevale are one of the UK's leading manufacturers of roofspace ventilation products and accessories. Over its long history Glidevale have developed probably the most comprehensive selection of tile and slate ventilators available in the UK. An increasingly important part of the Glidevale range is our In-line tile and slate ventilators.

### Compact Range of In-line Tile and Slate Ventilators

In addition to its range of hundreds of dedicated profiles Glidevale can now offer a compact range of 6 key profiles that will cover the majority of your roof space ventilation requirements. The result is a simplified stock offering, ideal for both roofing and builders merchants.



#### Key profile

Flat Interlocking 1

Double Pantile 2

Double Roman 3

Plain Tile 4

Universal Interlocking Plain Tile 5

GV11 Soaker Slate 6

### BENEFITS

- Compact range of profiles cover most of your ventilation requirements.
- Unobtrusive profile – flush grille section set into the base ensures the vent is virtually unseen from the ground.
- Concealed baffles catch any wind driven rain or snow that might penetrate the grille and return it via positive drainage channels to the roof slope.
- Excellent 'free draining' design ensures no ponding of water in the vent.
- Superior wind up lift resistance on interlocking designs.
- Easily installed wherever required as part of the normal tile/slating process.
- Integral 4mm insect screen ensures no unwanted visitors.
- AA fire rated versions (to BS 476: Part 3: 2004).
- Designed and developed under BS EN ISO 9001.

#### Where to use the In-line ventilator

- At low level or high level where the roof construction does not allow for eaves or ridge ventilation.
- Where complex wall or fire break walls obstruct air flow in the roof space.
- In complex roof shapes where effective cross ventilation is not possible.
- and as a terminal for soil vent pipes, see below

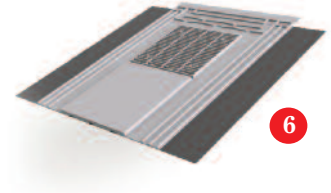
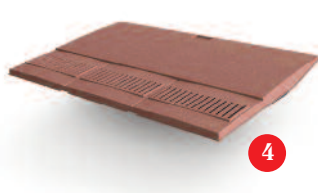


Soil Universal Pipe Adaptor



Flexi Pipe (for soil vent or extract terminal)

# glidevale



## Free airflow

## House colours

## For use with

10,000mm <sup>2</sup>	Terracotta, Blue black, Brown, Red	Marley Modern, Redland Mini Stonewold, Sandtoft Calderdale, Russell Grampian
10,000mm <sup>2</sup>	Terracotta, Blue black, Brown, Red	Marley Mendip, Redland Grovebury, Sandtoft Double Pantile, Russell Pennine
10,000mm <sup>2</sup>	Terracotta, Blue black, Brown, Red	Marley Double Roman, Redland Double Roman, Russell Double Roman
7,500mm <sup>2</sup>	Terracotta, Blue black, Brown, Red	Double Lap Plain Tiles
10,000mm <sup>2</sup>	Terracotta, Blue black, Brown, Red	Marley Ashmore, Redland Duo, Forticrete Gemini
10,000mm <sup>2</sup>	Blue black	Natural and man-made double lap slates

## Performance

All Glidevale In-line ventilators guarantee excellent performance.

	Interlocking	Slate Vent	Plain Tile
Guaranteed net free ventilation area	10,000mm <sup>2</sup>	10,000mm <sup>2</sup>	7,500mm <sup>2</sup>
Spacing centres:	5,000mm <sup>2</sup> /m	2.0m	2.0m
	10,000mm <sup>2</sup> /m	1.0m	1.0m
Minimum roof pitch	22.5 deg.	20 deg.	35 deg.

### Airflow resistance when used as SVP/Extract Terminal

54m <sup>3</sup> /hr (15 litre/second)	10 Pa	10 Pa	7 Pa
108m <sup>3</sup> /hr (30 litre/second)	42 Pa	42 Pa	28 Pa
216m <sup>3</sup> /hr (60 litre/second)	162 Pa	162 Pa	109 Pa





#### **Composition and manufacture**

All Glidevale In-line ventilators are manufactured from upvc, polypropylene or ABS for a consistently high quality finish and long lasting construction. With a design life in excess of 30 years and excellent weathering characteristics Glidevale ventilators will complement any roof for many years to come.

#### **Building Regulations**

All Glidevale In-line ventilators can be used to comply with:

##### *Roofspace ventilation:*

Building Regulations Approved Document C, BS 5250 and BS 5534.

##### *Soil vent pipes:*

Building Regulations Approved Document H.

##### *Mechanical ventilator terminal:*

Building Regulations Approved Document F.

Glidevale's compact range of In-line tile and slate ventilators are at the core of an unrivalled capability. Whether you want to cover the widest number of applications with the fewest number of references or you need to match the exact profile and colour for a heritage project Glidevale have the solution. Glidevale is the '**one stop shop**' for roof ventilation solutions.

*Stockist's stamp*

#### **GLIDEVALE LIMITED**

2 Brooklands Road, Sale, Cheshire M33 3SS

Tel: 0161 905 5700 Fax: 0161 905 2085

Email: [info@glidevale.com](mailto:info@glidevale.com) Web: [www.glidevale.com](http://www.glidevale.com)

Glidevale Limited maintains a policy of continuous development and reserves the right to amend product specifications without notice.

#### **BPD**

A division of Building Product Design Ltd. Company Registration No: 3944123

