

High-performance adhesive for larger areas (special foil carrier)

Sigan 1



Fast adhesion of new coverings onto levelling compounds and chipboard

Applications:

Patented, dry adhesive for the installation of textile and resilient floor coverings which guarantees to leave no residues when removed later. Suitable for any size area. Sigan is resistant to cleaning agents and spray extraction cleaning. Sigan is suitable for underfloor heating and permits usage under high loads and traffic such as chair castors or forklift traffic. For interior use only.

► Suitable for:

Resilient floor covering (sheets and tiles)*:

- PVC, CV floor coverings
- PVC luxury floor coverings up to 130 cm long
- Homogeneous rubber
- PUR floor coverings in sheets up to 2.0 mm, e.g. WPT PURline®
- Enomer floor coverings, e.g. Upofloor Lifeline®
- Vinyl-polyester floor coverings or woven vinyl

Textile flooring*:

- Textile floor coverings with all common backings (except for PVC backing)
- Carpet tiles with fleece, PVC or bitumen backing
- Kugelgarn® and Kugelvlies®
- FINETT 7 (100% PP needle punch floor covering)
- Flotex

► Suitable for use on*:

Only use Sigan 1 with Planus special primer.

- Cementitious levelling compound (sanded)
- Calcium sulphate levelling compound (dried and sanded according to manufacturer's recommendation)
- Epoxy resin vapour barrier
- 2-Component PU Levelling Compound (e.g. UZIN KR 410)
- Chipboard P3/P5/P7, plywood and MDF boards (level butts/joints with low-slump cementitious levelling compound)
- UZIN RenoTop PLUS
- Aluminium and metal

Note: For additional combinations of floor covering and subfloor obtain technical advice.

*see important notes



ÖKOLINE

for new resilient and textile floor covering

ON levelling compound, chip board, metal

Provides the highest possible level of emission safety and contributes towards creating a healthy room climate. Marked with the "Blue Angel" for low-emission floor covering adhesives and other installation materials according to RAL-UZ 113.

Ingredients: Acrylic copolymers, wetting and defoaming agents, plastic film, paper.

Product features & properties:

- Quick and easy installation
- No trapped air bubbles thanks to micro-perforation and ventilation channels
- Floor covering immediately ready for foot traffic and loading
- Can be welded/jointed immediately
- Later removal leaves no residue
- "Blue Angel" as per RAL-UZ 113
- EMICODE EC1 PLUS/very low-emission

Technical specifications:

Packaging:	carton	
Packaging content:	Sigan 1:	75 cm x 25 m
	Sigan 1 tape:	5 cm x 25 m
Shelf life	min. 2 years	
Colour:	transparent	
Substrate temperature:	min. 15 °C	
Open time:	none	
Working time:	unlimited	
Set to traffic:	immediately after installation	
Sealing/jointing seams:	immediately after installation	

Substrate preparation:

- ▶ The substrate must be sound, flat, permanently dry, free of cracks, clean and free of materials that could impair adhesion.
- ▶ Test the substrate in accordance with applicable standards and notices and report any deficiencies.
- ▶ Thoroughly vacuum, prime and smooth the surface.
- ▶ Depending on the substrate and floor covering, suitable primers and levelling compounds can be taken from the UZIN product overview.
- ▶ Always allow primer and levelling compound to dry well all the way through.
- ▶ Aluminium and non-rusting metals must be thoroughly ground out and cleaned; degrease if necessary.
- ▶ Observe the product data sheets of the other UZIN products as well as the floor coverings used.

Application:

Perfect bonding with Sigan 1 and removal without residues is guaranteed with Planus. Do not use any other primer!

Apply special Planus primer:

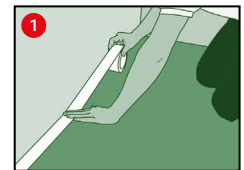
- ▶ Clean subfloor well with industrial vacuum cleaner
 - ▶ Shake Planus container well and refill liquid undiluted into clean bucket
 - ▶ Prime repaired/filled areas with a pre-coating of Planus and allow to dry.
 - ▶ Evenly prime crosswise with a fine-pored UZIN foam roller.
 - ▶ Avoid the formation of puddles. Apply two times on wooden materials using a Nylon fibre roller. The surface must show a thin film after drying (light gloss).
 - ▶ Allow to dry for at least 2 hours with good ventilation. The Planus must be completely dried out. The drying time depends on the ventilation, the room climate and the sub-surface. On sub-surfaces containing plaster or bound with calcium sulphate, drying can take up to 4 hours.
 - ▶ Do not allow floor covering to acclimatise on Planus
- Trial bonding: Rub Sigan 1 well onto substrate. Re-apply Planus if Sigan 1 detaches from the substrate or obtain your technical advice.
- ▶ In order to minimize a possible forming of joints, you should allow the floor covering and the Sigan 1 to acclimatise sufficiently (48 h) according to the manufacture's recommendations.



requires Planus
Special Precoat

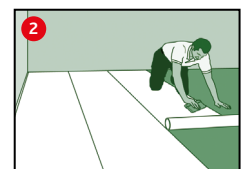
1 Install 50 mm Sigan 1 tape:

- ▶ Apply Sigan 1 tape along walls and doors, a) to even out uneven walls, b) for increased adhesion in the edge areas, c) for gluing areas that are difficult to access.
- ▶ Do not pull off the protective paper yet.
- ▶ Do not overlap the Sigan 1 tape, but mount edge to edge, or cut back to a butt-joint where overlapping.



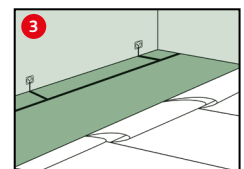
2 Installing 750 mm Sigan 1 Roll:

- ▶ Unroll the Sigan 1 in the running or working direction of the new floor covering – with a slight pressure on the roll – preferably roll out overlapping, rub down well and then cut back to the joint using a hooked knife, or roll out edge to edge directly (max. 3 mm gap allowed, no overlapping). Do not damage the subfloor.
- ▶ Sigan 1 may overlap Sigan 1 tape but must be cut back to fit edge to edge.
- ▶ Install the last run of Sigan 1 starting from the wall. Cut back the resulting overlap to fit edge-to-edge using a hooked knife. Do not damage the substrate while doing this.
- ▶ Wrap any remaining Sigan 1 roll with protective paper (edge protection and protection against dust).
- ▶ Ventilation channels may show with resilient floor covering.
- ▶ Only roll out the same amount of Sigan 1 as the amount of floor covering that will be installed on the same day.



3 Preparations for horizontal conductive floor covering:

- ▶ Pull back the Sigan 1 protective paper approx. 40 cm across the direction of the run or the seam of the new floor covering. Do not fold!
- ▶ With a distance from the wall of approx. 10 cm over the whole width of the room, glue one run of self-adhesive copper strip onto the exposed Sigan 1. The non-adhesive side faces upwards.
- ▶ Install a terminal lug (approx. 1 m) at the level of the earth potential connection to earth overlapping the previously laid copper tape. The connection must be carried out by a qualified electrician!
- ▶ Place the protective paper back onto Sigan 1 and press down.
- ▶ Carry out the same procedure on the opposite side (2 connections per room).



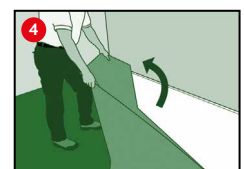
Attention: Only use coverings with horizontal conducting back coatings.

The copper tape may show through the floor covering.

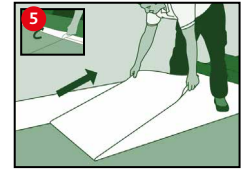
Never apply the strongly bonding side (covered with protective paper) onto the subfloor.

4 Installing the floor covering:

- ▶ Lay out the floor covering and fit approximately.
- ▶ Fold back half of the floor covering run in the running direction.
- ▶ Pull protective paper off Sigan 1 tape.

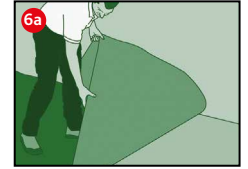


- 5**
- ▶ Pull the protective paper away from the Sigan 1 horizontally and straight up to the folded back floor covering.
 - ▶ Cut off the pulled off protective paper leaving a remnant of 10 cm. Fold the remnant under the folded back floor covering (forming a flap).
 - ▶ Stack the protective paper and roll together (minimises the waste volume).



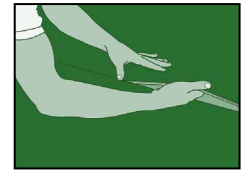
6a Textile flooring:

- ▶ Lay the first half of the textile floor covering free from tension and undulations and rub down.
- ▶ Fold back the second half of the textile floor covering and pull of the remainder of the protective paper with the help of the flap.
- ▶ Lay the textile floor covering, rub/roll down and cut to fit at the edge.



Installing textile floor covering with seam.

- ▶ Cut seam according to manufacturer's recommendation before installation. Use a steel rail underneath when making a double cut (never cut through Sigan 1).
- ▶ The seam of the floor covering must not lie on the Sigan 1 joint.
- ▶ Install the carpet run precisely at the seam.
- ▶ Fold back half of textile floor covering (can also be taken back from the seam).
- ▶ Pull off protective paper horizontally and form a flap.
- ▶ Lay and rub down the first run, and then lay the second run bit by bit precisely along the seam, and rub down.
- ▶ Rub/roll down well in crosswise direction.



Attention: Never use knee kickers and seam clamps!

Water trick

When laying the seam, when cutting to shape and when pushing the textile covering under radiators or around columns, etc., proceed as follows:

- ▶ Pull the protective paper from the Sigan 1.
- ▶ Dampen the Sigan 1 at the desired position using a sponge. Only use a little water as too much may damage the substrate.
- ▶ Push the textile covering into the desired position (aqua-planing effect).
- ▶ When the water evaporates, the Sigan 1 will recover its full adhesive strength.
- ▶ Rub down the textile covering again.



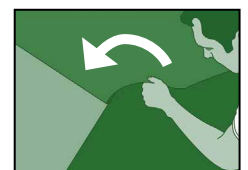
6b Resilient floor coverings:

- ▶ Push in the first half of the floor covering bit by bit (avoiding air bubbles) and rub/roll down in crosswise direction.
- ▶ Fold back the second half of the floor covering and pull of the remainder of the protective paper with the help of the flap.
- ▶ Slowly push in the floor covering, rub/roll down and cut to fit at the edge.



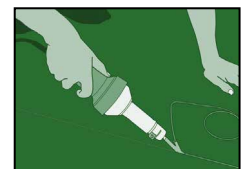
Install elastic floor covering with seam.

- ▶ Cut seam according to manufacturer's recommendation before installation. Use a steel rail underneath when making a double cut (never cut through Sigan 1).
- ▶ The seam of the floor covering must not lie on the Sigan 1 joint.
- ▶ Without changing its position, fold back half of the floor covering.
- ▶ Pull off protective paper horizontally and form a flap.
- ▶ Lay and rub down the first run, and then push in the second run bit by bit up to the seam at an angle, and lay to match precisely.
- ▶ Rub/roll down well in crosswise direction.



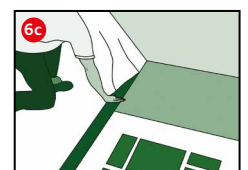
Welding/jointing seams and joints

- ▶ Joints and seams of elastic floor coverings in sheets or tiles (except: luxury floor coverings in planks and tiles) must be thermally or chemically welded together.
- ▶ The specifications of the floor covering manufacturer must be observed when performing the welding/jointing action.
- ▶ Welding/jointing can be performed immediately after installation.



6c Luxury floor covering and tiles:

- ▶ Measure the room, divide into planks/tiles. Mark the starting point of the first row of planks/tiles with a suitable pen on the protective paper.
- ▶ Place a steel rail along the starting points and align.
- ▶ Pull the protective paper away from the Sigan 1 horizontally and straight up to the steel rail.
- ▶ Tear off the protective paper along the steel rail at an angle toward the top. The straight line this created serves as reference line of the first row of planks/tiles.
- ▶ Stack the protective paper and roll together (minimises the waste volume).



- ▶ Install the planks/tiles along the reference line without stressing and press down firmly by hand.
- ▶ Continually pull back the protective paper horizontally and straight. Install the floor covering as described.
- ▶ If the installation process is interrupted, the protective paper can be reapplied as protection for the Sigan 1.
- ▶ After installation, rub/roll down firmly crosswise over the whole area.



Sigan: Removing floor covering without residues – without damaging the substrate.

- ▶ First cut floor covering into strips (approx. 25 – 50 cm) using a hooked blade. Do not damage the substrate!
- ▶ Separate the floor covering with edge tape from the substrate starting at one corner.
- ▶ Pull away floor covering **together** with Sigan at a **flat** angle, and you're finished!

No adhesive residues will remain on the substrate when using Sigan together with Planus! As a rule, Sigan can no longer be removed from the back of the floor covering, but can be disposed off with the floor covering without problem.

- ▶ Before any further laying with Sigan, the substrate must first be vacuum cleaned. Apply the special Planus Primer as required, and allow to dry completely. Then install the new floor covering with Sigan.



Important notes:

Store in the standing position in a dry and cool place, away from direct sunlight. Rewrap opened rolls in protective paper.

- ▶ Use Sigan 1 onto metals pretreated with anti-rust primer.
- ▶ With chipboard P3/P5/P7, plywood and MDF boards level butts and joints with low-slump cementitious levelling compound.
- ▶ When installing onto UZIN RenoTop PLUS we recommend the use of 1-C PU based Primer (e. g. UZIN PE 414 Turbo) as a skim coat to prevent swellings on the seams.
- ▶ PVC and rubber floor covering as well as textile floor covering with PVC backing in sheets and tiles, showing dimensional changes, tested according to the test standards EN 434 or EN ISO 23999, of $\leq 0.40\%$; luxury floor covering, showing dimensional changes, tested according to the test standards EN 434 or EN ISO 23999, of $\leq 0.25\%$ as well as tufted textile floor covering. Do not install LVT floor coverings which appear warped or stressed.
- ▶ Resilient floor covering (exception of luxury floor covering) should be jointed/welded. The specifications of the floor covering manufacturer must be observed when performing the welding action.
- ▶ Jointing/welding can be performed immediately after bonding.
- ▶ **Floor coverings not recommended:**
 - PVC luxury floor coverings from DLW Flooring
- ▶ **Further substrates:**
 - Resilient floor covering (PVC, CV, Linoleum) → Sigan 2
 - PVC-coated cork floor covering → Sigan 2
 - PUR and epoxy resin coating → Sigan 2
 - Polyolefin floor covering (PO coverings) → Sigan 2
 - Wood flooring/laminate → Sigan 3
 - Ceramic tiles, smooth → Sigan 2
 - Ceramic tiling/Terrazzo → Sigan 2
 - Sealed cork floor covering → Sigan 3
 - Textile floor covering → Sigaway

Safety at work and environmental protection:

The product requires no particular measures to ensure safety at work. For reasons of workplace hygiene, we would recommend that you should not eat, drink or smoke while applying this product. Keep out of the reach of children.

For more information visit:
www.uzin.com or call +49 (0)731 4097-0

Disposal:

Empty shells and the cardboard packaging can be recycled. Material remnants can be disposed of as household waste.

Warranty:

UZIN grants a 5-year warranty for all properties claimed in the processing instructions.

Sigan complies to VOB Part C, Pt. 2.7 Adhesives: "They form a fixed and durable connection, and cause no impairment to either the floor covering or the substrate and produce no pollution through odour after fitting".

- Follow the generally accepted rules of the trade and the technology for laying floor coverings according to the valid national standards EN, DIN, VOB, OE, SIA and TKB-Technical Briefing Note 12.

The warranty becomes void if:

- Sigan 1 products are used in outside areas, operating theatres and in vehicle construction.
- unusual influences, and in particular those of a chemical or mechanical nature, affect the product.
- sub-surface unevenness occurs (insufficient stability of the sub-surface).
- in case of any utilisation or processing that deviates from the laying instructions (never use Sigan 1 on stairs or walls).
- PVC/CV runs or tiles are not thermally or chemically welded/joined and joints/seams arise for this reason.
- discolouration arises from chemical reactions between the floor covering and the sub-surface.
- if joints are formed or warping occurs due to dimensional changes of the floor covering.
- the floor covering was laid stretched and under tension.
- dampness affects the Sigan 1.
- laying is carried out at temperatures below 15°C (at the floor!).
- Sigan 1 is used in areas with increased air humidity and/or thermal loadings (e.g. conservatories).
- no adhesive trials are carried out.