

Euroroof

Bituminous Membranes

A new range of waterproofing membranes that offer faster, flexible installation methods for both refurbishment and new build applications.

The Euroroo range is designed to transform the process of working with traditional bituminous membrane systems, speeding up installation times without compromising the long-term performance of the waterproofing solution.

Contents

■ Introduction	30
■ System benefits	31
■ Warranty, registered installers	31
■ System selector	32
■ Typical applications	33
■ Euroroo SupaGOLD	34
■ Euroroo Mastergold Mineral	35
■ Euroroo Mono	36
■ Euroroo Rapid	37
■ Underlays and vapour control layers	38
■ Application details	40
■ Product data	43



Euroroo*f*

Bituminous Membranes

Euroroo*f* waterproofing systems offer specifiers and installers a range of bituminous cap sheets, underlays and vapour barriers, as well as a choice of installation methods. The result is roofing systems that are cost-effective and quick to install.

Suited to both refurbishment and new build applications, Euroroo*f* solutions ensure the integrity of the waterproofing is maintained whilst opening up opportunities for time and cost efficiencies.

Modern methods of roof installation require flexibility in both the specification and application of materials, therefore the Euroroo*f* range offers a choice of application methods that suit all project and site safety requirements.

Euroroo*f* SupaGOLD – an insurance backed waterproofing system that provides long-term peace of mind. Independently insured by an underwriter that is a member of the UK’s Financial Services Compensation Scheme, Financial Ombudsman Service and the Association of British Insurers (ABI).

Euroroo*f* Mastergold Mineral – a system that transforms working with traditional bituminous membranes, speeding up installation time without compromising long-term performance.

Euroroo*f* Mono – a single layer, flame-free waterproofing solution for both new construction and refurbishment projects.

Euroroo*f* Rapid – a single layer overlay that is torch-applied to quickly re-establish the long-term waterproofing integrity of buildings in need of refurbishment due to failing roof membranes.

System Benefits

Durable, Flexible Systems

Euroroo systems are designed for simple installation and are fully adaptable to both new build and refurbishment applications. With high tensile strength and pliability, the membranes perform in the harshest conditions, with excellent resistance to puncture and UV degradation.

Fire Performance

The Euroroo Mastergold Mineral cap sheet is tested to BS 476: Part 3 and is unrestricted in use under the current Building Regulations.

Three Application Methods

Euroroo vapour barriers and underlays offer consistent technical performance across a variety of installation methods to best suit project requirements. They can be installed in any one of three ways, including a flame-free application method for sensitive detailing and high risk environments. The choice of application method is: thermo-adhesive, self-adhesive and torch-applied.

Euroroo Registered Installers

The Euroroo range is only supplied to registered contractors, whose contracts managers and operatives must undergo a stringent Alumasc training programme prior to obtaining registered status. Quality of workmanship is monitored on site on an ongoing basis to ensure compliance with the warranty.

Alumasc Warranty

Euroroo systems carry a range of insurance backed warranties, covering design, product and installation.

Warranties are supported by public and product liability insurances with a total indemnity limit of £50 million. Third party insurance backing giving cover against latent product defects is available via Prudential Regulation Authority (PRA) regulated insurance brokers subject to independent final inspection, documented compliance with an agreed maintenance schedule and pre-payment of the relevant premium.

Approvals

British Board of Agrément Approved

Euroroo Mastergold – BBA certificate 13/5066.
Euroroo Mono – BBA certificate 13/5030.

CE Marking

All Euroroo roofing membranes, including underlays and vapour barriers, are CE marked, and Declaration of Performance (DoP) certificates are available upon request.

Quality and Environment

Independently assessed to the ISO 9001: 2008 Quality Management Standard and manufactured to the ISO 14001: 2004 Environmental Management Standard.

Scores highly in BREEAM ratings (notably in Section MAT5 for responsible sourcing of materials) and contributes to a very good generic rating in the BRE's Green Guide to Specification, capable of an 'A+' rating when installed on timber or metal decks.



Euroroo
 f System Selector

Concrete Deck

Cap Sheet	Underlay	PIR Insulation	Insulation Adhesion	Vapour Control	Primer
SupaGOLD (Torch-applied)	Supa XL (Torch-applied)	BGT	PU adhesive	Torchtite VB	Bitumen Primer
	Supa XL (Torch-applied)	BGT	PU adhesive	Self-adhesive VCL	SA Primer
Mastergold Mineral (Torch-applied)	Thermo-adhesive	GTF	PU adhesive	Torchtite VB	Bitumen Primer
	Thermo-adhesive	GTF	PU adhesive	Self-adhesive VCL	SA Primer
	Thermo-adhesive	GTF	Thermo-adhesion	Dual Bond S/A VCL	SA Primer
	Mastergold (Torch-applied)	BGT	PU adhesive	Torchtite VB	Bitumen Primer
	Mastergold (Torch-applied)	BGT	PU adhesive	Self-adhesive VCL	SA Primer
	Mastergold (Torch-applied)	BGT	Thermo-adhesion	Dual Bond S/A VCL	SA Primer
	Self-adhesive	GTF	PU adhesive	Torchtite VB	Bitumen Primer
	Self-adhesive	GTF	PU adhesive	Self-adhesive VCL	SA Primer
	Self-adhesive	GTF	Thermo-adhesion	Dual Bond S/A VCL	SA Primer
	n/a	GTF	PU adhesive	Torchtite VB	Bitumen Primer
Mono (PU adhered)	n/a	GTF	PU adhesive	Self-adhesive VCL	SA Primer
	n/a	GTF	Thermo-adhesion	Dual Bond S/A VCL	SA Primer

Plywood Deck

Cap Sheet	Underlay	PIR Insulation	Insulation Adhesion	Vapour Control	Primer
SupaGOLD (Torch-applied)	Supa XL (Torch-applied)	BGT	Thermo-adhesion	Thermo-adhesive VB	Bitumen Primer
	Supa XL (Torch-applied)	BGT	PU adhesive	Self-adhesive VCL	SA Primer
Mastergold Mineral (Torch-applied)	Thermo-adhesive	GTF	PU adhesive	Self-adhesive VCL	SA Primer
	Thermo-adhesive	GTF	Thermo-adhesion	Thermo-adhesive VB	Bitumen Primer
	Thermo-adhesive	GTF	Thermo-adhesion	Dual Bond S/A VCL	SA Primer
	Mastergold (Torch-applied)	BGT	PU adhesive	Self-adhesive VCL	SA Primer
	Mastergold (Torch-applied)	BGT	Thermo-adhesion	Thermo-adhesive VB	Bitumen Primer
	Mastergold (Torch-applied)	BGT	Thermo-adhesion	Dual Bond S/A VCL	SA Primer
	Self-adhesive	GTF	PU adhesive	Self-adhesive VCL	SA Primer
	Self-adhesive	GTF	Thermo-adhesion	Thermo-adhesive VB	Bitumen Primer
	Self-adhesive	GTF	Thermo-adhesion	Dual Bond S/A VCL	SA Primer
	n/a	GTF	Thermo-adhesion	Thermo-adhesive VB	Bitumen Primer
Mono (PU adhered)	n/a	GTF	Thermo-adhesion	Self-adhesive VCL	SA Primer
	n/a	GTF	Thermo-adhesion	Dual Bond S/A VCL	SA Primer

Metal Deck

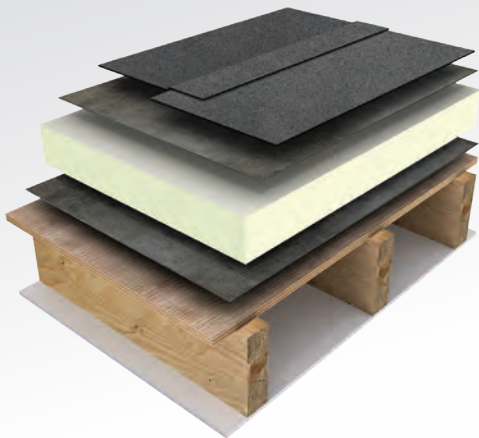
Cap Sheet	Underlay	PIR Insulation	Insulation Adhesion	Vapour Control	Primer
SupaGOLD (Torch-applied)	Supa XL (Torch-applied)	BGT	PU adhesive	Self-adhesive VCL	SA Primer
	Supa XL (Torch-applied)	BGT	PU adhesive	Torchtite VB	Bitumen Primer
Mastergold Mineral (Torch-applied)	Thermo-adhesive	GTF	PU adhesive	Self-adhesive VCL	SA Primer
	Thermo-adhesive	GTF	PU adhesive	Torchtite VB	Bitumen Primer
	Thermo-adhesive	GTF	Thermo-adhesion	Dual Bond S/A VCL	SA Primer
	Mastergold (Torch-applied)	BGT	PU adhesive	Self-adhesive VCL	SA Primer
	Mastergold (Torch-applied)	BGT	PU adhesive	Torchtite VB	Bitumen Primer
	Mastergold (Torch-applied)	BGT	Thermo-adhesion	Dual Bond S/A VCL	SA Primer
	Self-adhesive	GTF	PU adhesive	Self-adhesive VCL	SA Primer
	Self-adhesive	GTF	PU adhesive	Torchtite VB	Bitumen Primer
	Self-adhesive	GTF	Thermo-adhesion	Dual Bond S/A VCL	SA Primer
	n/a	GTF	PU adhesive	Self-adhesive VCL	SA Primer
Mono (PU adhered)	n/a	GTF	PU adhesive	Torchtite VB	Bitumen Primer
	n/a	GTF	Thermo-adhesion	Dual Bond S/A VCL	SA Primer

Refurbishment

Cap Sheet	Underlay	PIR Insulation	Insulation Adhesion	Vapour Control	Primer
Mastergold Mineral (Torch-applied)	Thermo-adhesive	GTF	PU adhesive	Torchtite VB	Bitumen Primer
	Self-adhesive	GTF	PU adhesive	Torchtite VB	Bitumen Primer
	Mastergold (Torch-applied)	BGT	PU adhesive	Torchtite VB	Bitumen Primer
Mono (PU adhered)	n/a	GTF	PU adhesive	Torchtite VB	Bitumen Primer
Rapid (Torch-applied)	n/a	n/a	n/a	n/a	No primer required

See Product Data table and separate Product Data Sheets for full product descriptions.

Typical Applications



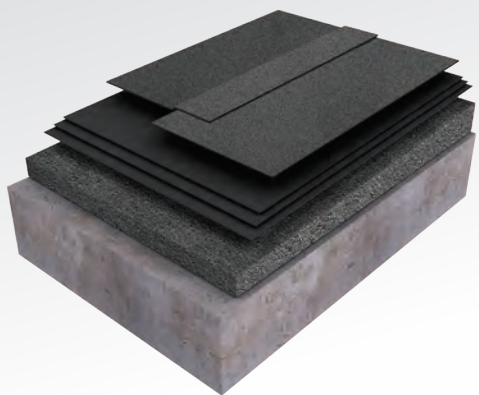
Warm Roof – New Build or Refurbishment

- EurorooF Mastergold Mineral – APP-modified cap sheet
- EurorooF Underlay – thermo-adhesive, torch-on or self-adhesive
- Alumasc PIR Insulation – rigid urethane
- EurorooF Self-adhesive Vapour Control Layer – flame-free application
- Plywood Deck – suitably primed



Warm Roof – Refurbishment

- EurorooF Mono – SBS-modified mineral surfaced cap sheet
- EurorooF PU Membrane Adhesive – low foaming adhesive
- Alumasc PIR Insulation – rigid urethane
- EurorooF Vapour Control Layer – selected to suit substrate
- Existing Roofing (if retained) – suitably primed
- Existing Plywood Deck



Single Layer Overlay

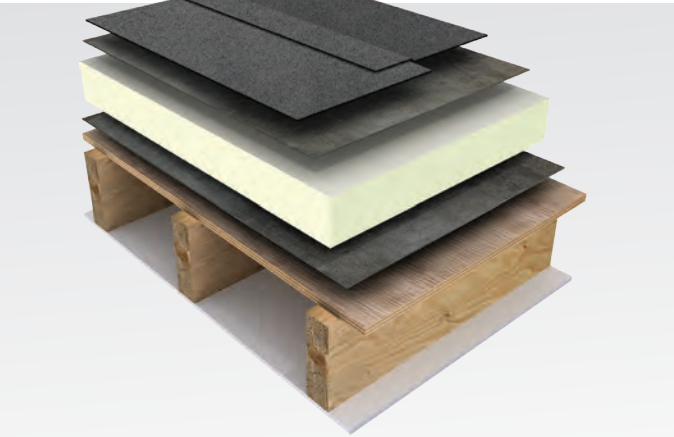
- EurorooF Rapid
Single layer cap sheet
- Existing Mineral Surfaced Felt
Suitably primed. Can also be used over existing mastic asphalt
- Existing Screed to Falls
- Existing Concrete Deck



Eurorooft SupaGOLD

Eurorooft SupaGOLD is a complete waterproofing system that provides long-term peace of mind; being accompanied by a 20 year insurance backed guarantee, independently insured by an underwriter that is a member of the UK’s Financial Services Compensation Scheme, Financial Ombudsman Service and the Association of British Insurers (ABI).

The Eurorooft SupaGOLD built-up warm roof system solution is ideal for roof refurbishment – to upgrade thermal performance, improve roof drainage and/or restore the water-tightness of the existing structure, or for new build applications.



Eurorooft SupaGOLD
Mineral surfaced 4.2mm cap sheet

Eurorooft Supa XL
Torch-applied 3.0mm underlay

Alumasc PIR Insulation
Bitumen glass tissue facing

Eurorooft Thermo-adhesive Vapour Barrier
Torch-applied and self-adhesive options for other deck types

Alumasc Bitumen Primer
Other options are available

Plywood Deck

Key Features

Warranty

The standard warranty period for Eurorooft SupaGOLD is 25 years, the first 12, 15 or 20 of which are independently insured. A pre-paid insurance backed guarantee provides protection against latent product and installation defect (even in the event of contractor or manufacturer insolvency). The policy indemnity level is set to the full contract value of the roofing works.

Lifespan

The Eurorooft SupaGOLD mineral surfaced high performance membrane will provide a durable roof waterproofing with a service life in excess of 25 years.

The Eurorooft SupaGOLD and Supa XL membranes are formulated with a superior APP modification and heavy duty reinforcement, ensuring excellent resistance to puncture and UV degradation, designed to perform in the most severe conditions.

Installation

The Eurorooft SupaGOLD system is installed exclusively by a select network of specialised Eurorooft SupaGOLD Registered Contractors.

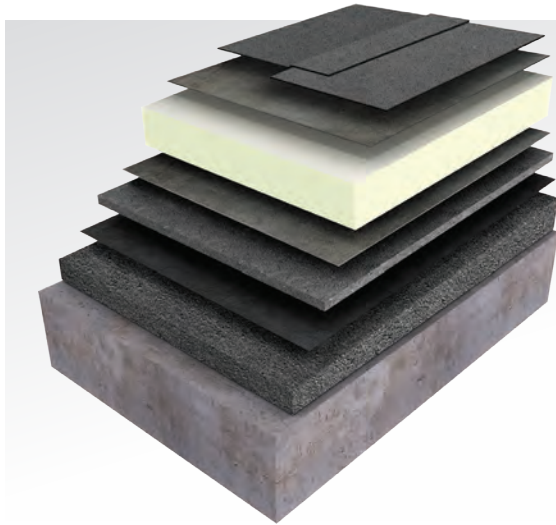
Performance

The APP-modified formulations of the Eurorooft SupaGOLD cap sheet and underlay have been optimised for compatibility with the torch-on method of installation, facilitating an excellent bond to the substrate and optimum lap security for high wind uplift resistance. The high performance APP compound underpins the high softening point and low temperature flexibility. The membrane’s enhanced reinforcement assures 100% dimensional stability and gives it a high puncture resistance.

Euroroo Mastergold Mineral

Euroroo Mastergold Mineral transforms working with traditional bituminous membranes, speeding up installation time without compromising long-term performance.

The Mastergold Mineral built-up warm roof solution can be used to upgrade thermal performance, improve roof drainage and/or restore the water-tightness of the existing structure. It is equally suited to new build applications, including green roof applications.



Euroroo Mastergold Mineral

Cap sheet also available in anti-root

Euroroo Thermo-adhesive Underlay

Also available in torch-applied and self-adhesive versions

Alumasc PIR Insulation

Available with glass tissue, bitumen glass tissue or foil facings

Euroroo Vapour Barrier

Torch-applied, thermo-adhesive or self-adhesive, dependent on substrate

Existing Roofing (if retained)

Suitably primed

Existing or New Concrete Deck

Key Features

Warranty

The typical warranty period for Euroroo Mastergold Mineral is 25 years.

Lifespan

Euroroo Mastergold Mineral is a high performance membrane which is BBA certified – Cert No. 13/5066. According to the BBA, 'under normal service conditions the membrane will provide a durable roof waterproofing with a service life in excess of 25 years'.

Mastergold Mineral membranes are designed to perform in the harshest conditions, with APP-modified bitumen ensuring excellent resistance to puncture and UV degradation.

Performance

The APP-modified formulations of Mastergold Mineral and the associated underlays have been optimised for compatibility with the torch-on method of installation, facilitating an excellent bond to the substrate and optimum lap security for high wind uplift resistance. The Mastergold Mineral cap sheet is fire tested to BS 476: Part 3 and is unrestricted in use under the current Building Regulations, Approved Document B.



Euroroo Mono

Euroroo Mono is an SBS-modified bitumen membrane with a black mineral finish. Widely used in new build applications, it is equally suited to roof refurbishment projects.

Mono was specially developed as a cost-effective, single layer waterproofing solution that is suitable for no-flame application. Bonding of the cap sheet is with polyurethane adhesive, with the laps heat welded.

Key Features

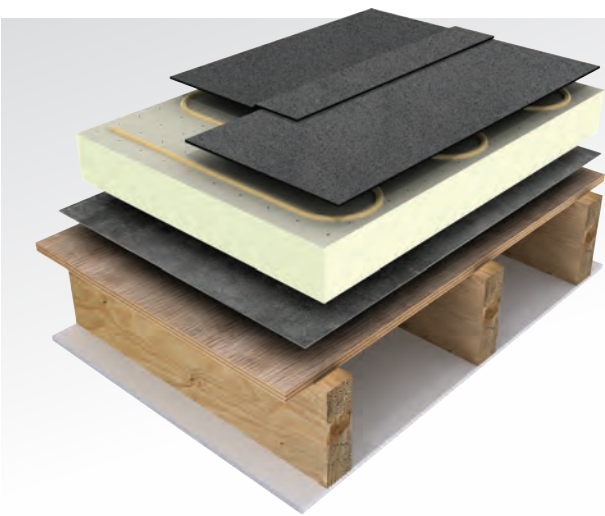
Warranty

The typical warranty period for Euroroo Mono is 15 years.

Lifespan

The Euroroo Mono membrane is BBA certified – Cert No. 13/5030. According to the BBA, ‘under normal service conditions the membrane will provide a durable roof waterproofing with a service life in excess of 25 years’.

Mono offers high tensile strength and pliability, along with excellent resistance to puncture and UV degradation.



Euroroo Mono
Mineral surfaced cap sheet

Euroroo PU Membrane Adhesive
Low foaming polyurethane adhesive

Alumasc PIR Insulation
Glass tissue facing

Euroroo Vapour Barrier
Torch-applied, thermo-adhesive or self-adhesive, dependent on substrate

Plywood Deck
Suitably primed

Performance

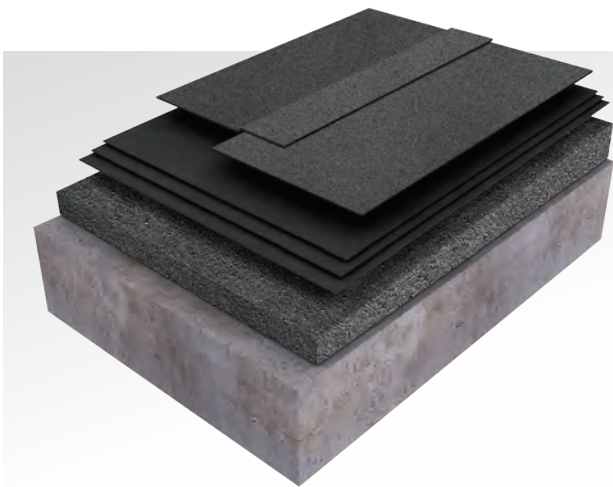
The SBS elastomeric bitumen coating ensures temperature flexibility, and its integral polyester reinforcement ensures excellent mechanical properties.

The quick, clean and safe installation methods of the Euroroo Mono single layer system provide excellent time and cost efficiencies during construction, whilst equally allowing the building to be operational at the earliest opportunity.

Euroroo Rapid

Euroroo Rapid is a single layer, torch-applied overlay used to re-establish the long-term waterproofing integrity of roofs in need of refurbishment.

Especially suited to application over mineral surfaced roofs, the Rapid membrane eliminates the need to prime or strip off the existing roof covering, minimising disruption and providing a cost-effective solution.



Euroroo Rapid
Single layer cap sheet

Existing Mineral Surfaced Felt
Suitably primed. Can also be used over existing mastic asphalt

Existing Screed to Falls

Existing Concrete Deck

Key Features

Warranty

The typical warranty period for Euroroo Rapid is 20 years.

Lifespan

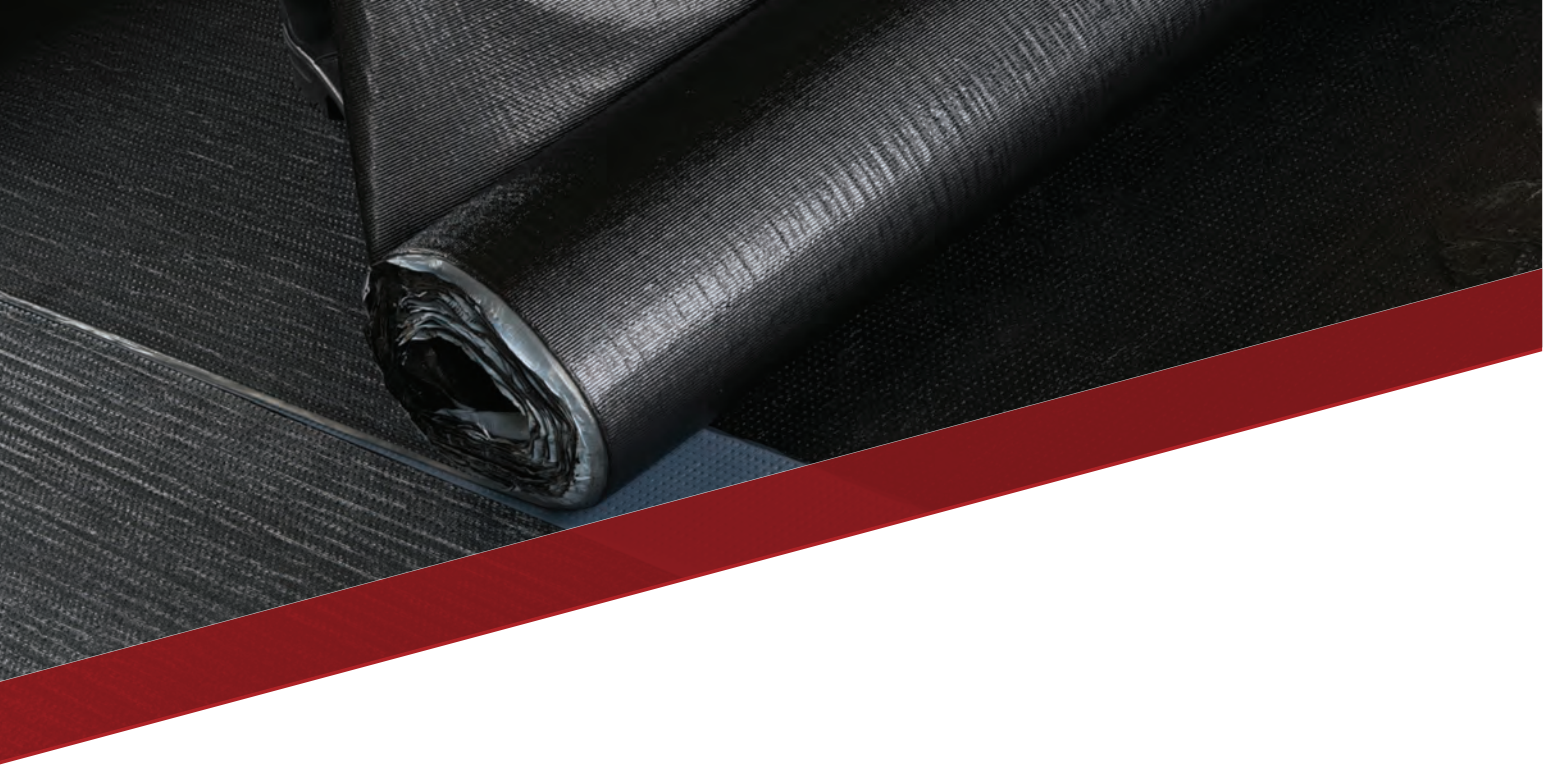
The Euroroo Rapid membrane has a typical life expectancy in excess of 20 years (under normal UK climatic conditions) and is resistant to puncture and UV degradation.

Rapid has excellent mechanical properties and is dimensionally stable.

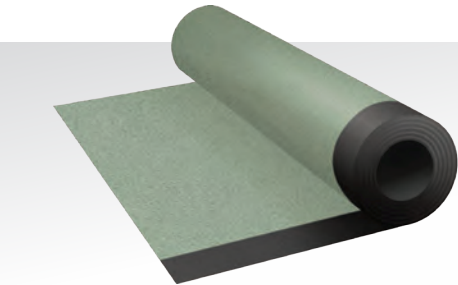
Performance

Euroroo Rapid is a uniquely formulated, dual-compound APP polymer modified torch-applied membrane, designed to provide exceptional adhesion to existing roof membranes.

When torched, a special compound on the underside of the membrane melts and flows to bond with the existing substrate, saturating it to minimise the risk of blistering from trapped moisture between the layers.

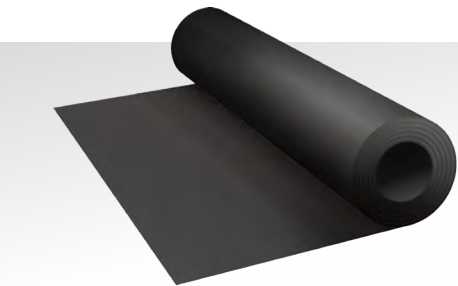


Eurorooft Underlays



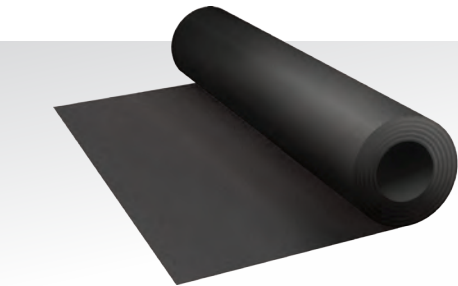
Eurorooft Self-adhesive Underlay

Self-adhesive underlay for use with glass tissue faced PIR insulation and suitable for use with torch-applied cap sheets, or in conjunction with self-adhesive cap sheets for flame-free applications.



Eurorooft Thermo-adhesive Underlay

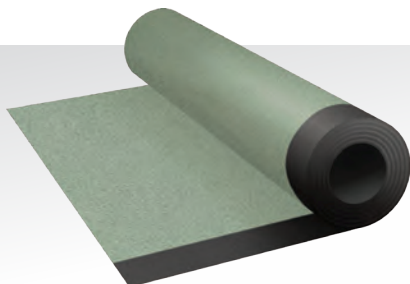
Thermo-adhesive underlay for use with glass tissue faced PIR insulation and suitable for simultaneous application with torch-applied cap sheets.



Eurorooft Mastergold Underlay

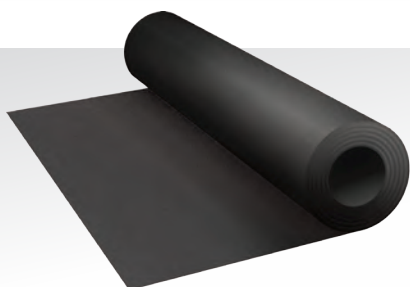
Torch-applied underlay suitable for use with bitumen glass tissue faced PIR insulation and torch-applied cap sheets.

Euroroo Vapour Control Layers



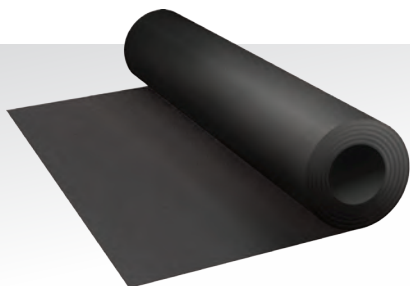
Euroroo Self-adhesive Vapour Control Layer

Self-adhesive vapour barrier for plywood, metal or concrete decks, suitable for flame-free applications. Used in conjunction with PU adhered insulation boards.



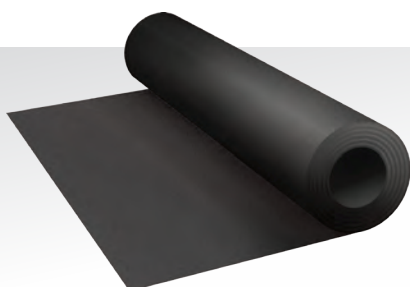
Euroroo Dual Bond Self-adhesive Vapour Barrier

Self-adhesive vapour barrier for metal, concrete or plywood decks, designed to receive PIR insulation boards bonded directly into its heat activated striped bituminous surface.



Euroroo Thermo-adhesive Vapour Barrier

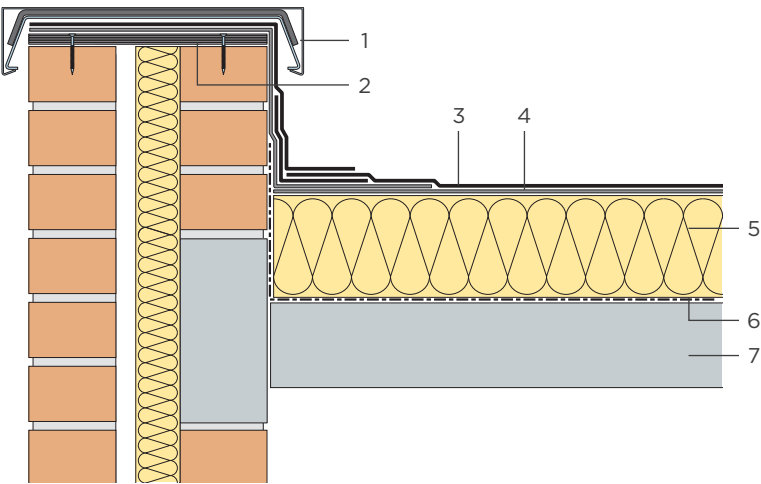
Thermo-adhesive vapour barrier for plywood decks, designed to receive PIR insulation boards bonded directly into its heat activated bituminous surface.



Euroroo Torchite Vapour Barrier

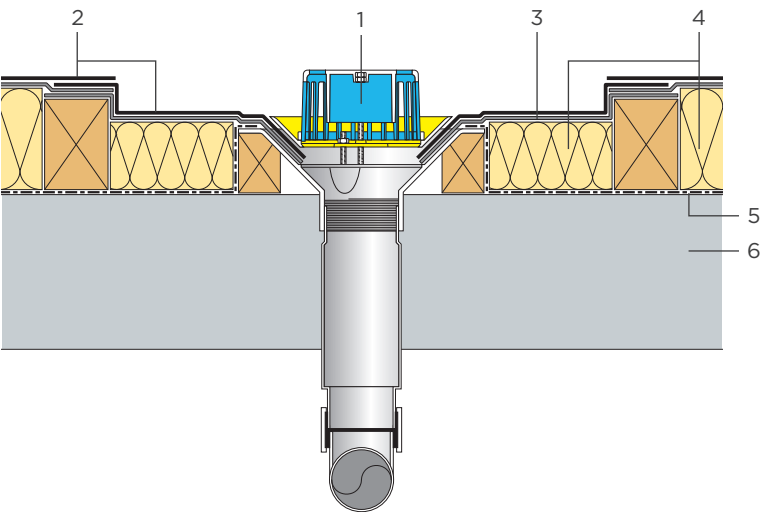
Torch-applied vapour barrier for metal or concrete decks. Used in conjunction with PU adhered PIR insulation boards.

Application Details



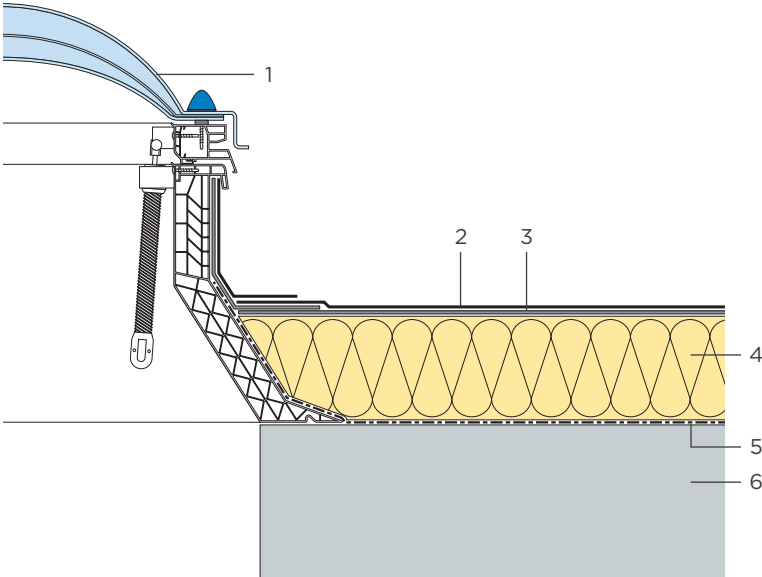
Upstand with Aluminium Coping

- | | |
|---|----------------------------------|
| 1 | Alumasc Skyline aluminium coping |
| 2 | Cavity closer |
| 3 | Eurorooft roofing membrane |
| 4 | Eurorooft underlay |
| 5 | Alumasc PIR insulation |
| 6 | Eurorooft vapour control layer |
| 7 | Primed substrate |



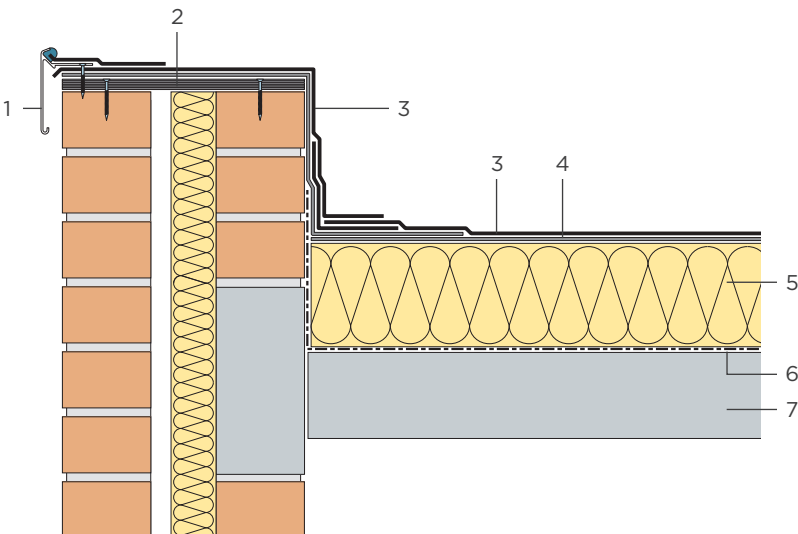
Roof Outlet

- | | |
|---|--------------------------------------|
| 1 | Harmer AV® outlet with domical grate |
| 2 | Eurorooft roofing membrane |
| 3 | Eurorooft underlay |
| 4 | Alumasc PIR insulation |
| 5 | Eurorooft vapour control layer |
| 6 | Primed substrate |



Modular Rooflight Curb

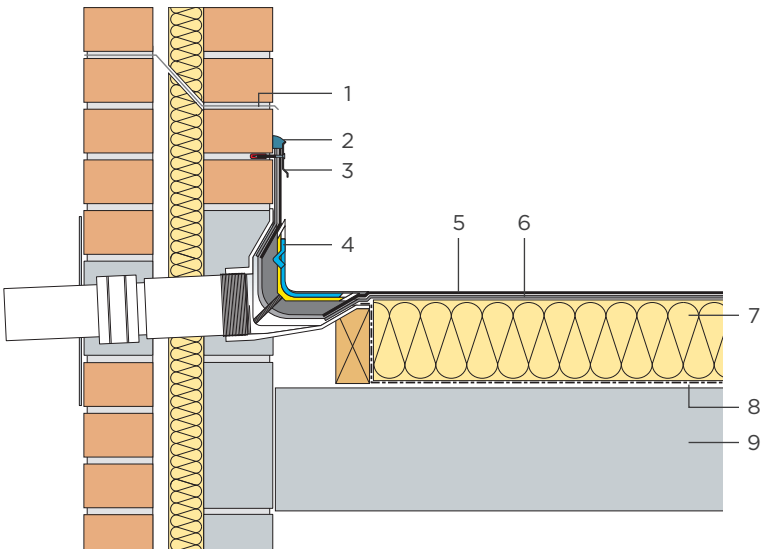
- | | |
|---|------------------------------|
| 1 | Alumasc modular rooflight |
| 2 | Eurorof roofing membrane |
| 3 | Eurorof underlay |
| 4 | Alumasc PIR insulation |
| 5 | Eurorof vapour control layer |
| 6 | Primed substrate |



Upstand with GRP Trim

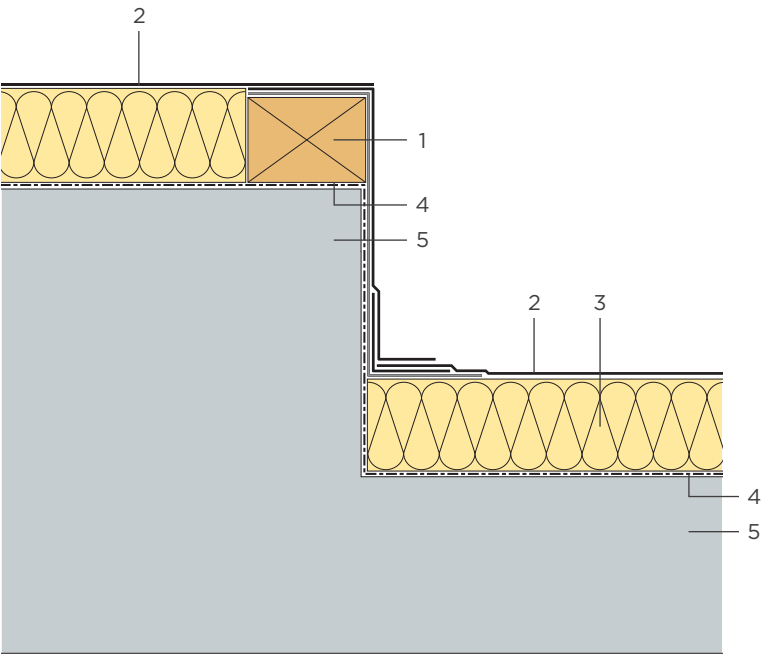
- | | |
|---|------------------------------|
| 1 | Alumasc GRP trim |
| 2 | Cavity closer |
| 3 | Eurorof roofing membrane |
| 4 | Eurorof underlay |
| 5 | Alumasc PIR insulation |
| 6 | Eurorof vapour control layer |
| 7 | Primed substrate |

Application Details



Upstand Outlet

- 1 Cavity tray
- 2 Derbitech HD sealant
- 3 Alumasc termination bar
- 4 Harmer two-way outlet
- 5 Euroroof roofing membrane
- 6 Euroroof underlay
- 7 Alumasc PIR insulation
- 8 Euroroof vapour control layer
- 9 Primed substrate



Change in Level

- 1 Treated timber packer
- 2 Euroroof roofing membrane in PU adhesive
- 3 Alumasc PIR insulation
- 4 Euroroof vapour control layer
- 5 Primed substrate

Product Data

Product	Characteristic	Description	Application Method				Size	Thickness or Coverage
			T/O	T/A	S/A	PU		
Cap Sheets								
SupaGOLD	Mineral surfaced, with superior APP bitumen compound	Independent insurance backed system	■				8.0 x 1.0m	4.2mm
Mastergold Mineral	Mineral surfaced, with APP bitumen compound	Composite reinforcement	■				7.5 x 1.0m	4mm
Mastergold Anti-Root	Mineral surfaced, with APP bitumen compound	Root barrier	■				7.5 x 1.0m	4mm
Mono	Mineral surfaced, with SBS bitumen compound	Single layer application				■	8.0 x 1.0m	4mm
Membrane Adhesive	Low-foaming PU adhesive	Adhesive for Mono membrane				■	6 kg drum	See product data sheet
Rapid	Mineral surfaced, with special dual bitumen compound	Single layer overlay	■				8.0 x 1.0m	5mm
Self-adhesive	Mineral surfaced, with self-adhesive bitumen compound	Flame-free detailing			■		8.0 x 1.0m	4mm
Underlays								
Supa XL	Superior APP compound, glass/polyester reinforced	For use with Supa 40 torch-applied cap sheet	■				10.0 x 1.0m	3mm
EurorooF Self-adhesive	SBS-modified bitumen, polyester reinforced	Flame-free underlay			■		16.0 x 1.0m	2mm
EurorooF Thermo-adhesive	Special modified bitumen, polyester reinforced	For use with torch-applied cap sheets		■			10.0 x 1.0m	2.5mm
EurorooF Mastergold	APP-modified bitumen, polyester reinforced	For use with torch-applied cap sheets	■				10.0 x 1.0m	3mm
Insulation								
Alumasc PIR BGT	Bitumen glass tissue faced	For torch-applied underlays	■				1200 x 834mm	Various
Alumasc PIR GTF	Glass tissue faced	For T/A or S/A underlays & PU adhered ap sheet		■		■	1200 x 834mm	
Insulation Adhesive	High-foaming PU adhesive	Adhesive for insulation				■	6 kg drum	See product data sheet
Vapour Control Layers								
EurorooF Self-adhesive	Aluminium/glass reinforced	Flame-free vapour barrier to receive insulation in PU adhesive			■		15.0 x 1.0m	2.6mm
EurorooF Thermo-adhesive	Aluminium/glass reinforced	Surface heated vapour barrier to receive insulation		■			10 x 1.0m	2mm
EurorooF Torchtitle	Aluminium/woven glass reinforced	Vapour barrier to receive insulation in PU adhesive	■				10 x 1.0m	3mm
EurorooF Dual Bond Self-adhesive	Aluminium/woven glass reinforced	Surface heated vapour barrier to receive insulation			■		8 x 1.08m	3.5mm
Primers								
Alumasc Bitumen Primer	Bitumen based	Surface primer	n/a	n/a	n/a	n/a	25 litre drum	150-250m²
EurorooF ZK Primer	Solvent based	Surface primer	n/a	n/a	n/a	n/a	25 kg drum	125-250m²
EurorooF Contact Primer	Spray-applied	Surface primer	n/a	n/a	n/a	n/a	17 kg canister	Up to 270m²

Note: Coverage rates are variable depending on prevailing conditions.

T/O	Torch-applied	S/A	Self-adhesive
T/A	Thermo-adhesive	PU	PU adhesive