



Millions of Square Meters
of Experience in Aluminium



Aluprof plant in Bielsko-Biala

ALUPROF

traditional and modern

Aluprof S.A. belongs to the **Grupa Kęty S.A. Capital Group**. The Company is one of the leading producers of aluminium systems in Europe. It has branches in many European countries and also in the USA. The main headquarters of Aluprof S.A. are in Bielsko-Biala, where its production lines and logistics centre is also located. The Opole branch manufactures roller shutter systems.

With over 50 years of experience and annual sales revenues exceeding 175 M EUR, Aluprof S.A. has over 1,300 regular clients. Exports account for 36% of total sales. The company employs more than 1,100 employees.

Located in Bielsko-Biala and Opole, the plants of Aluprof S.A. have a surface area of over 80 thousand m² and modern fit-out including:

- › automated line for the production of insulated profiles
- › ten state-of-the-art production lines for roller shutter profiles and roller-boxes
- › high bay warehouses
- › modern, fully automated lines for powder coating



Aluprof plant in Opole

- beginning of 21st century • manufacturing plants are established by August Gross, Jan Ochsner and Karol Szwab in Bielsk
- 1945 • manufacturing plant transfers to state management with a new business name, "Fabryka Wyrobów Metalowych"
- 1951 • a state enterprise is established under the business name "Fabryka Wyrobów Metalowych – Biała"
- 1965 • change of name to "Bielskie Zakłady Okuć i Instalacji "Budoplast"
- 1973 • a change of name again to "Zakłady Elementów Wyposażenia Budownictwa "Metalplast-Bielsko"
at the beginning of the 90's Metalplast-Bielsko is privatized
- 1996-1997 • capital connections with GRUPA KĘTY S.A.
- 1997 • Aluprof Sp. z o.o. in Opole is established
- 31 January 2006 • Grupa KĘTY S.A. purchases 100% shares in Aluprof
- 2006 • merger of Metalplast-Bielsko S.A. and Aluprof Sp. z o.o.
- 2007 • Aluprof opens a modern trade & logistics centre in Hungary
- 2011 • expansion of the plant in Opole – Aluprof opens new warehouses and a modern powder paint shop
- 2014 • Expansion of logistics and warehouse space in Bielsko-Biała and Opole
- 2015 • Start-up of vertical paint shop in Bielsko-Biała



Headquarters of Grupa Kęty S.A., Capital Group, in Bielsko-Biała

GRUPA KĘTY

holding company in a nutshell

ALUPROF S.A. is part of the **Grupa Kęty S.A., Capital Group**, a holding group comprising five main business segments operating in the following areas: production of profiles and aluminium components, planning and production of architectural systems and external aluminium roller shutters, production of flexible packaging, construction and installation services of aluminium curtain walls and production of accessories for installation of windows and doors.

21 companies belong to the Capital Group, of which **11** are foreign companies, processing approx. **72 thousand** aluminium raw materials annually. Consolidated revenue from sales of Grupa Kęty S.A. total **430 million EUR**, export constitutes 40% of total sales, and the recipients are approx. 3300 companies from 45 countries worldwide. Shares of Grupa Kęty S.A. have been listed since 1996 on the Warsaw Stock Exchange.



32 export
countries

● – export countries ● – companies ○ – plants

ALUPROF
worldwide

Aluprof S.A. sells its solutions to the majority of European countries, and also to the US. The Company has a representation and distribution centres all over Europe i.e. – in Germany, Great Britain, the Ukraine, the Czech Republic, in Hungary, in Rumania, in Belgium, Denmark and USA. Particularly noteworthy is the modern logistic centre in Hungary, which has a warehouse hall of a surface area of 2 900 m² equipped with 8 high bay shelves.

Aluprof is regarded on foreign markets as an important trustworthy partner, which consequently systematically increases export sales, currently constituting 35% of total sales. The recipients of high quality architectural systems from Poland are from new markets: Belgium, Holland, Estonia, Azerbaijan, Georgia, United Arab Emirates.



BUSINESS

Social Responsibility

Aluprof, part of the Kęty Group of companies, firmly believes in and practices the concept of Business Social Responsibility and sustainable development achieved by creating versatile relations with the immediate environment. In practice, this involves considering the needs of as wide a group as possible of our "stakeholders": shareholders, employees, clients, business partners and the local community. Building these relations with the immediate environment guarantees our Company's harmonious development and ultimately we enjoy the positive image which this creates.

Responsibility for the whole Group does not only involve satisfying all formal and legal requirements, but also increased investment in human resources, in environmental protection and relations with our immediate environment, that is, voluntary involvement. In 2014 Grupa Kęty S.A. began the process of formalizing its earlier activity to comply with the general world standards and procedural norms. In this process the guidelines of PN-ISO 26000:2012 standard were formally implemented in Grupa Kęty S.A., the aim of which is increased efficiency of tools used and their integration with the systems and decision-making structures in the Group. In December 2014 Grupa Kęty S.A. joined the United Nations Global Compact initiative, which means that it upholds and applies 10 principles in the field of human rights, work standards, protection of the natural environment and countering corruption.



GRUPA KĘTY'S FOUNDATION for Children in Podbeskidzie

FUNDACJA GRUPA KĘTY DZIECIOM PODBESKIDZIA was founded by Grupa Kęty S.A. Capital Group in August 2011. This organization's activity centres mainly on assistance to pupils in special education centres and Childrens Homes so that they receive an education, have access to various sources of knowledge, and qualifications which will give them a better start in their adult and independent life. The Foundation believes in equality of opportunity and therefore one of its goals is to shift the balance more in favour of the children so that they are not disadvantaged, through active participation in various local and national cultural and sports events.



MANAGEMENT SYSTEM

Grupa Kęty manages almost 100% of its aluminium waste produced in the plant in Kęty and dependent companies nationwide. This waste is used as a component in raw materials to manufacture new aluminium extrusions. The Company also receives aluminium waste from end users and from production in other plants. This process is subject to rigorous requirements as to the quality of the scrap-metal purchased, so that polluted aluminium is not used in re-melting, and no detrimental combinations form in the air, which could pose a threat to the environment.



GREEN accounting

The involvement of Grupa Kęty, to which Aluprof belongs, in environmental protection, means that the traditional accounting system has been adapted to the requirements of eco-friendly activity. And a "green accounting" model has been introduced, enabling a full costs analysis of environmental protection and is included in the enterprise's financial reporting.

The Company keeps comprehensive records of the costs involved in environmental protection, examines their structure and analyses changes occurring over time. The data sources for financial evaluation of pro environmental activity are: investment expenditure, the costs of maintaining and exploiting protective equipment, the level of charges required by law for exploitation of the environment, product charges etc. Environmental accounting is a tool facilitating our decision-making relating to ecological activity, and based on the evaluation of effectiveness optimal decisions are taken as to investment and organizational ventures.

Aluprof has introduced e-invoices out of our concern for the environment and the improvement of efficiency in activities with cooperating companies. This is both a convenient and safe solution that helps to protect the natural environment. And it is also a time & money saver.



Enjoy creating WITH ALUPROF

The possibility of producing aluminium profiles at Grupa Kęty S.A. Capital Group gives enterprises a free hand, market flexibility, and also an offer of competitive price. Aluprof has available lines for automatic joining of aluminium profiles with the aid of thermal breaks. Manufactured "warm-formed" profiles are the basic element of window and door systems which the Company offers. The manufacture of insulated profiles is also part of our services. Apart from the standard products clients can also order profiles in two colours – that is, two different colours of coating, coating with anode, anode with a woodgrain coating etc.

Our offer also includes a bending service for profiles according to drawings and templates. We can also make bent structures from raw material profiles, or coated in a RAL, NCS, ATEC colour range, and also in woodgrain ADEC colours.



In both its plants, Aluprof has available modern powder coating paint shops with high performance, fully automated lines, fitted with a quick colour change painting booths, and also a vertical paint shop. Because of the additional manual coating lines, the Company is able to easily adapt to clients requirements depending on the size of the order and deadline. We consider as a priority solutions which are environmentally friendly using non-toxic preparations and applying treatment of aluminium without chromium. The "sandwich" type cabin and the application system and recycling of powder allow effective use of the coating and quick colour change. The entire coating process is computer controlled, which guarantees permanence and easy duplication of coating parameters, including its thickness. We hold certificates from Qualicoat, Seaside and many powder paints suppliers which confirm the effectiveness of our supervision of the respective parameters.

Our offer includes: all types of powder coatings from the RAL, NCS range and ATEC range and paints with extended guarantee, DECORAL woodgrain surfaces. Coating of metal plate 1250 × 3000 and a double layer system (primer + finishing paint) we recommend in a "basin, coastal" environment. Output of all Aluprof paint shops is 7 million m² annually. Maximum dimensions: L 7200 mm; H 500 mm; weight of the material in suspension up to 300 kg.

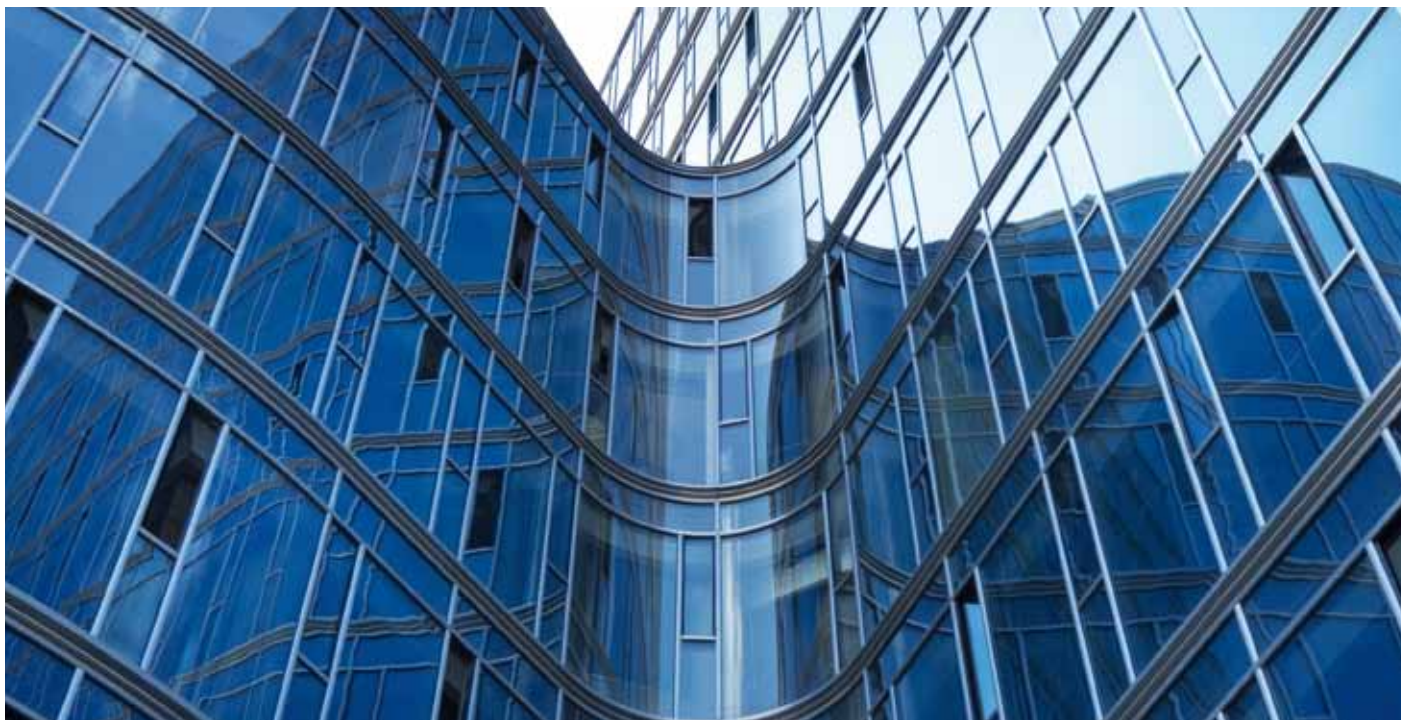
Our offer includes anodised profiles, in a wide colour range. Profiles with a brush and shot blasting effect are also available. The quality of the coating is guaranteed by a Qualanod certificate.



We Profile ARCHITECTURE

Our glass buildings, because of our effective aluminium systems, evoke admiration and recognition. Solid construction of the profiles and the shining glass give a unique result. And all the more so, when the building attracts attention for its original architecture. Aluprof's projects are eye catching for passers-by because of their unusual appearance. In Poland annually over 250 new buildings are constructed with the use of Aluprof aluminium systems: car sales showrooms, banks and hotels, university departments, hospitals, technology parks, operas, philharmonic halls, sky scrapers and shopping and entertainment complexes.

Our business partners can always count on support and consultations with our technical support department who can resolve technical problems, provide technical knowledge regarding use of new systems, construction-calculation software, training for technical personnel and supply information about our products. The department's task is also to provide advice and support in the choice of systems, material evaluations, specifications, technical drawings and planning details and calculations.



OUR SOLUTIONS are tailor made for you

Individually planned construction solutions and details can give a building a unique character, which stands out in its surrounds. Buildings which have these types of features, are constructed precisely according to the designer's vision, and are not only the source of great satisfaction for all those taking part in the designing process and contractors – the building often becomes the characteristic focus point for a given area or the whole district, a symbol of the quality of contemporary architecture, having a direct influence on the image of the town and a welcome sight in the daily lives of residents. One of the most effective (and impressive) methods to distinguish the building this way is the use of the “objective solution” as regards aluminium and glass façades, more and more frequently used lately by architects.

In our activity we strive to constantly improve the quality of products. They satisfy the requirements of European standards as regards the quality of alloys, fabricating tolerances and the characteristics of durability. Our know how is the technical thought. Trained specialist staff work on the latest technological solutions.

The designed systems satisfy market needs, and help architectural visions become reality, and also play a significant part in the development of the aluminium structures sector.



HIGHEST QUALITY

services and technologies

Aluprof always places a great weight on continuous development and maintenance of the highest level of its manufactured products and services. Each employee has a duty to maintain a high level of quality. The process begins at the suppliers, that is, from high quality components, from which systems are constructed. Innovative technologies and a modern machinery park, guarantee solid and durable products and the Client's satisfaction. This is also down to the creative work of the construction department.

Within the Grupa Kęty, in Złotów there is an accredited **Measurement and Research Laboratory**, available innovative equipment including the largest in Central Eastern Europe test chamber for windows, doors, curtain walls and external roller shutters.



ALUPROF

amongst the Best

The numerous awards from specialists, including the Leader of the Joinery Market 2014, Pearl of Polish Economy 2014, Construction Brand of 2014, Consumer Leader of Quality 2013, Dynamic Company, Crystal Profile 2011, Business Cheetahs 2012, Effective Company 2011, Pearl of the Polish Economy Forbes Diamonds, Quality Q Brown Emblem, Quality of 2009, Client's Laurel 2009, Diamond to Gold Leader of Polish Business, Business Credibility Certificate, Genius of the Polish Construction Industry, European Medal for MB-86, EU Standard and many others.



AMBASSADOR of passive building

The Company's offer includes products which comply with the requirements of green construction and which perform well both in commercial and private construction work. When striving to reduce costs involved in the use of buildings, enhancement of energy saving takes on particular importance.

One of the most effective ways of attain this goal is to use modern first fix joinery solutions which increase the thermal insulation performance of buildings. Therefore, the Company is widening its offer to include further solutions, which ideally satisfy the needs of energy-saving and passive construction. In 2014 alone, 4 systems received certificates from the Passive House Institute in Darmstadt (PHI), and two façade systems were awarded the highest possible class of effectiveness A+.

THE POLISH INSTITUTE OF PASSIVE BUILDING AND RENEWABLE ENERGY accorded Aluprof the status of Ambassador for Passive House Construction for the production of first fix joinery products recommended for installation in passive buildings and recommends the Company as a trustworthy partner in all passive building projects.

ENERGY-EFFICIENT products



Window system with thermal break – MB-104 Passive

The best, in terms of thermal insulation performance, of all Aluprof systems, MB-104 Passive meets all the requirements that apply to components used in passive building. This system is intended for fabrication of external structure elements such as various types of highly resistant windows, entrance enclosures, shop fronts and spatial structures of an excellent water resistance, air tightness, and sound insulation performance. MB-104 Passive is available in two versions: SI and Aero. Both versions have a PHI Darmstadt certificate.



Mullion and transom curtain wall system – MB-SR50N HI+

The system allows to build curtain walls with visible, narrow dividing lines and provides durability and strength to the structure. Thanks to a wide range of profiles offered by Aluprof, even the most audacious aluminium & glass structure ideas can become reality. In order to obtain the optimum thermal and sound insulation performance and to facilitate the installation of the MB-SR50N HI+ system-based curtain walls, a PE insulator was used, as it provides an excellent thermal insulation performance (U_f from 0,7 W/m²K), while its shape guides the screw during the façade's glazing process. MB-SR50N HI+ was awarded with highest possible class A+ by PHI Darmstadt.



Mullion and transom curtain wall system – MB-TT50

MB-TT50 is intended for building curtain or in-fill walls, roofs and spatial structures. This product brings a whole new approach to the construction of aluminium profiles and accessories that are responsible for tightness and thermal insulation of the connections. This makes the façade protect the building against heat loss. MB-TT50 gives ample possibilities in shaping the building's envelope, it is also intended as a basis for fire and burglar-resistant solutions. As it is the case for MB-SR50N HI+, MB-TT50 was awarded with highest possible class A+ by PHI Darmstadt.



SP & SP-E flush-mounted roller shutters

SP & SP-E system-based rollers shutters seamlessly integrate the building's façade and form an integral part thereof. The front section of the box is equally a layer for any finishing material (plaster, clinker, etc.) so that it remains an unnoticed element of the façade. SP & SP-E systems provide an excellent thermal and sound insulation performance and, being an additional "closing element", do not interfere with the construction of window and door lintel. Neither do they affect the building's energy use. SP & SP-E systems' roller-boxes: SP/165 and SP-E/165 are certified "Passive building component" by Passive House Institute in Darmstadt.



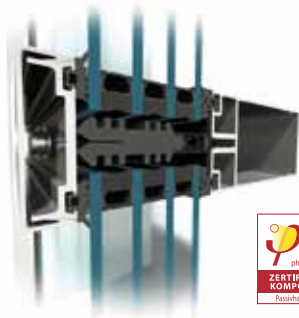
MB-TT50 curtain wall system

TECHNICAL SPECIFICATIONS

- mullion and transom depth: from 65 to 245 mm
- high thermal insulation: U_f from 0,5 W/(m²K)
- glazing thickness: up to 64 mm
- air tightness: AE 1350 Pa, EN 12153:2004; EN 12152:2004
- water resistance: RE 1800 Pa, EN 12155:2004; EN 12154:2004
- impact resistance: IS / E5, EN 13049: 2004, EN 14019:2006

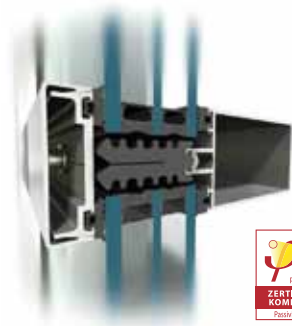
CONSTRUCTION

- awarded with highest possible class A+ by PHI Darmstadt
- profile shapes enable flushing of mullion-transom profiles from the inside of the façade
- wide variety of angular connections to allow greater spatial structure design flexibility
- set of adapted insulators to provide an excellent protection against heat loss, while their special shape facilitates prefabrication of the façade
- high capacity of mullion-transom connections (3,0 KN) coupled with wide range of glazing to enable the use of various types of glass and the installation of large, heavy sets
- wide range of façade-integrated, openable elements: various types of doors and windows, including roof slope windows, façade-integrated windows, tilt and parallel opening windows (MB-SR50N OW)





MB-SR50N HI+ curtain wall system



TECHNICAL SPECIFICATIONS

- mullion and transom depth: from 50 to 325 mm
- high thermal insulation: U_f from 0,7 W/(m²K)
- glazing thickness: up to 56 mm
- air tightness: AE 1050, EN 12152
- water resistance: RE 1200, EN 12154
- impact resistance: IS/ES, EN 14019

CONSTRUCTION

- certified highest class A+ by the PHI Darmstadt Institute, MB-SR50N HI+ system can be successfully used in all passive buildings
- angle joints for a custom formation of aluminium developments
- mullions and transoms with "sharp" edges, allowing to build load-bearing structures with appearance of a uniform truss
- aesthetic varieties of façades and numerous overlay profiles of different shapes provide a multitude of variants of the façade
- wide range of façade-integrated, openable elements: various types of doors and windows, including roof slope windows, façade-integrated windows, tilt and parallel opening windows (MB-SR50N OW)
- important range of glazing and available insulators and accessories to achieve a high level of thermal insulation performance
- possibility of bending profiles and creating arch structures



MB-104 PASSIVE window system



TECHNICAL SPECIFICATIONS

- frame and casement depth: from 95 to 104 mm
- high thermal insulation (openable window): U_f from 0,53 W/(m²K)
- max. casement dimensions (HxL): 2900 mm / 1700 mm
- max casement weight: ISO lig
- air tightness, class 4, PN-EN 12207
- water resistance: class AE 1800, PN-EN 12208
- wind load resistance: class C5/B5, PN-EN 12210

DESCRIPTION

- windows certified by the Passive House Institute Darmstadt (applies to versions MB-104 Passive SI & MB-104 Passive Aero)
- excellent tightness- and thermal insulation performance that exceeds current regulations
- important glazing range, up to 81 mm
- "Euro" grooves in fittings enable installation of most of the available fittings, intended both for aluminium and plastic windows
- possibility to use typical or concealed hinges



MB-86 window & door system



TECHNICAL SPECIFICATIONS

- frame and leaf/casement depth: from 77 mm to 86 mm
- high thermal insulation: U_f from 0,57 W/(m²K)
- glazing thickness: up to 67,5 mm
- air tightness, class 4, PN-EN 12207:2001
- water resistance: class E 1500, PN-EN 12208:2001
- wind load resistance: class C5, PN-EN 12210:2001

DESCRIPTION

- wide range of profiles guarantees the desired aesthetics and resistance
- with its new shape, wide thermal breaks allow the use of an additional barrier in the profiles' insulation zone
- two-component, central gasket seals perfectly and thermally insulates the space between the leaf/casement and the frame
- glazing beads with additional sealing are available in three versions: Standard, Prestige and Style
- profiles' shapes are adapted to numerous multi-point locking systems, including concealed hinges
- a wide range of glazing allows the use of all common types of triple glazing, sound insulating or burglar-resistant units
- profiles' drainage functionality is available in two versions: traditional and concealed
- compliance with CE marking requirements



MB-77HS

lift-slide door system



TECHNICAL SPECIFICATIONS

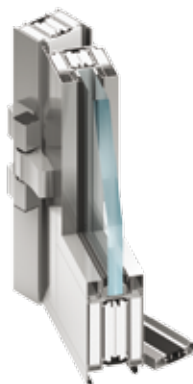
- mullion and transom depth: from 77 to 271 mm
- high thermal insulation: U_f from 1,4 W/(m²K)
- glazing thickness: up to 53,5 mm
- air tightness, class 4, EN 12207
- water resistance: class 9A, EN 12208
- wind load resistance: up to class C4, EN 12210

DESCRIPTION

- durable and slender profiles to enable fabrication of low-threshold doors, leaf weight of up to 400 kg, H=up to 3,3 m and W=up to 3,3 m
- frames are available in two versions: 2-rail and 3-rail
- comfortable solutions with low threshold
- wide range of infills, with one-or two-chambered sets, as well as thermal breaks and additional accessories and insulation inserts to provide very good thermal and sound insulation performance
- glazing beads come in three versions: Standard (rectangular), Prestige (rounded) and Style (shaped)
- "closed-shape" glazing beads and burglar-resistant details allow to obtain important burglar-resistant performance, this without having to make any significant changes to the door's structural elements
- unique glazing & end gaskets and appropriate hardware to provide excellent air tightness and water resistance performance



MB-78EI fire-rated system



TECHNICAL SPECIFICATIONS

- mullion and transom depth: from 78 to 118 mm
- high thermal insulation: U_f from 1,6 W/(m²K)
- glazing thickness: up to 84 mm
- air tightness, class 2, PN-EN 12207:2001
- water resistance, class 5A, PN-EN 12208:2001
- fire resistance rating
 - fixed partition walls and single-acting doors: EI15, EI30, EI45, EI60, EN 13501-2
 - sliding doors: EI30, EN 1634-1

DESCRIPTION

- single or double-acting doors, leaf height of up to 2500 mm or automatic MB-78EI DPA-based sliding doors H=up to 2515 mm
- fixed walls and partitions with doors up to 4m high
- use of oblique battens and bent profiles to build arch structures
- wide selection of accessories, including aesthetically looking roller guides
- silicone jointed glazed walls up to 3,6 m high



MB-80 OFFICE partitioning systems



TECHNICAL SPECIFICATIONS

- different types of infill: panes 4-14 mm thick, furniture boards 16-18 mm thick, gypsum plasterboards
- possibility to fabricate 80 mm and 92 mm thick walls
- excellent sound insulation in office spaces - noise reduction of 50 dB, depending on the type of infill used
- free division of space, angle of refraction within the range 90°÷180°
- max. development height: 5,5 m

DESCRIPTION

- depth & construction of the basic profiles enable installation of intra-pane louvers
- can be combined with a standard, 75 mm-thick gypsum plasterboards
- simple prefabrication & installation, direct on-site pre-fabrication in option
- cables inside the wall, installation of standard power sockets
- can be combined with MB-45 wall or (centrally or flushed with the plane of the wall) and with MB-45S door (flushed with the plane of the wall and with non-protruding hinges), and with MB-45 OFFICE door (with centrally-installed leaf, flushed with the plane of the wall, plus non-protruding hinges)



MB-EXPO

MB-EXPO MOBILE

partitioning systems



TECHNICAL SPECIFICATIONS

- invisible glazing gaskets
- light, elegant structure
- glazing 8, 10, 12 mm
- fixed profile depth regardless of the glass pane thickness
- structures up to 4 m high
- adapted to use numerous companies' hardware products: Aluprof, Geze

DESCRIPTION

- glass partition walling system intended for fabrication of various types of internal partition walls with all-glass doors
- soundproofs the selected zones, without visually limiting the interior space
- high-quality segment for parking and folding doors
- perfect for offices and shops, malls and exhibition centres
- easy prefabrication & installation
- rich colours



ALUPROF

a right place for roller shutters

Distribution centre for roller shutters, gates, grilles and insect screens located in Opole contributes largely to the success of our company. Aluprof roller shutters are made from carefully selected materials to ensure the highest quality of the product. Whether **flush-mounted (SP & SP-E)**, **front-mounted (SK, SKP, SKO, SKO-P)**, **top-mounted (SKN)** or **lintel (SKT Opoterm)**, our roller shutters are designed to improve building's energy use.

Aluprof it is the first Polish system manufacturer to offer RC3 certified burglar-resistant systems. This was confirmed by tests carried out in an accredited laboratory to PN-EN 1627:2011. With this roller shutter system, you can be sure that your home is safe, especially during the time of your absence, while on holiday/winter vacation.



SAR

burglar-resistant roller shutters

TECHNICAL SPECIFICATIONS

- boxes dimensions: 180, 205, 230, 250 mm
- max. height: 4,4 m
- max. width: 2,8 m
- burglary-resistance certificate RC3

DESCRIPTION

- reinforced channels prevent deflection and profiles from being pulling out
- patent-protected latch mechanism in the lower part of the roller shutter that prevents the curtain from being raised up
- reinforcement of the endslat – high rigidity and stability of the curtain
- resistant structure of the curtain prevents any impact-induced damage to the roller shutter





SP/SP-E flush-mounted systems



TECHNICAL SPECIFICATIONS

- boxes dimensions: 137,165,180, 205 mm
- max. height: 5,9 m
- max. width: 4,4 m
- burglary-resistance certificate RC3
- certified by Passive House Institute
- after plastering, the side of the box is invisible

DESCRIPTION

- rollers shutters can be controlled manually or by means of an electric drive connected to the control system
- can be combined with insect screen
- SP SP-E systems-based roller-boxes allow to perform maintenance and service work without disturbing the privacy of the occupants.
- large selection of colours (standard chart) to meet the needs of the most demanding Customers



SK/SKP/SKO adaptive systems



TECHNICAL SPECIFICATIONS

- RAL & woodgrain colours
- boxes dimensions: 125 mm to 205 mm
- max. height: 4,37 m
- max. width: 3,9 m
- burglary-resistance certificate RC3

DESCRIPTION

- adaptive roller systems are intended for use in existing buildings
- rollers shutters can be controlled manually or by means of an electric drive connected to the control system
- SKT OPOTERM roller shutters ensure an excellent thermal insulation allowing to significantly reduce heating costs in winter and heat flow in summer, and offering a full integration with MOSKITO system that protects interior spaces against insects
- large selection of colours (standard chart) to meet the needs of the most demanding Customers



BGR garage door system



TECHNICAL SPECIFICATIONS

- can be made in SK & SKO-P boxes and on electric-driven running console (rocker switch, keyfob)
- boxes dimensions: 250, 300 and 350 mm
- max. height: 5 m
- max. width: 6,5 m
- RAL & woodgrain colours

DESCRIPTION

- designed for use in newly erected and in existing buildings
- vertically-operating garage door is a good option when a driveway is short or where there is no driveway at all
- can combine profiles with glazing to let natural light flood in
- in accordance with the applicable standards, garage door comes equipped with a fall protection device. It can also be equipped with a set of photocells and with protection device so the user will not be trapped under the door



MRS/MRSZ MRO/MRP insect screen systems



TECHNICAL SPECIFICATIONS

- RAL & woodgrain colours
- type of profile: extruded aluminium profile
- internal or external corners or adjustable internal corners
- max. width: 1,7 m
- max. height: 2,5 m
- can be installed on the outside of the window/door or on mobile rails
- available windows: wood, PVC, aluminium

DESCRIPTION

Aluprof offers an extensive range of insect screen systems:

- **Fixed insect screen**
 - mounted on the outer side of the window frame
- **Fixed frame insect screen**
 - mounted on flushed aluminium windows
- **Hinged insect screen**
 - mounted directly to the door frame or to the reveal using hinges with a self-closer
- **Sliding insect screen**
 - mounted directly to the door frame or to the reveal, and used in large glass bays, balconies, terraces and winter gardens

