

IMPERIAL BRICKS







WELCOME

WELCOME TO OUR COLLECTION OF THE FINEST TRADITIONAL HANDMADE, WIRECUT AND PRESSED BRICKS

We specialise in producing a growing range with a strong focus on regional variations, available in imperial and metric sizes.

Using time-honoured manufacturing methods, our skilled brickmakers expertly reproduce authentic colours and textures found across the UK over the past 500 years.

Every brick in our collection has its own individual character and appeal, making our products perfect for the restoration, renovation and conservation of period properties, whilst offering an authentic look for new build projects.

Our range includes reclamation style bricks which offer an ideal alternative to reclaims, with the added peace of mind that the bricks are frost-resistant, F2 rated and fully guaranteed and offering sustainable supplies for ongoing projects.



IMPERIAL
handmade bricks



CONTENTS

7	IMPERIAL BRICKS RANGE
8	OUR SERVICES
10	BRICK TYPES
11	DID YOU KNOW?
12	BRICK MATCHER APP
14	REGIONAL VARIATIONS

PRODUCTS

17	ORIGINAL LONDON STOCK
18	RECLAMATION YELLOW STOCK
19	RECLAMATION YELLOW MULTI STOCK
20	YELLOW STOCK
21	YELLOW MULTI STOCK
22	RECLAMATION CAMBRIDGE BUFF
23	CAMBRIDGE BUFF
24	RESTORATION OXFORD YELLOW MULTI WATERSTRUCK
25	OXFORD YELLOW MULTI WATERSTRUCK
26	OLD JACOBAN BUFF MULTI
27	RECLAMATION SOFT RED
28	WEATHERED SOFT RED
29	SOFT RED
30	SOFT RED MULTI
31	2 1/4" SOFT RED
32	RESTORATION RED WATERSTRUCK
33	RED WATERSTRUCK
34	HERITAGE SOFT ORANGE
36	RECLAMATION SHIRE BLEND



CONTENTS

37	URBAN WEATHERED	65	IMPERIAL BRICK TILES
38	OLDE RECLAMATION CLAMP	67	PAVERS
39	COUNTRY BLEND	68	50MM TUDOR BRICK/PAVER
40	FARMHOUSE ORANGE	69	SUFFOLK FLOOR BRICK
41	2" TUDOR MULTI	70	LIME MORTAR
43	2 ⁵ / ₈ " RECLAMATION CHESHIRE	72	BRICK TINTING SERVICES
44	2 ¹ / ₂ " RECLAMATION GEORGIAN		
45	2 ¹ / ₂ " GEORGIAN		
46	3" IMPERIAL / METRIC RECLAMATION HANDMADE	73	QUALITY
47	3" IMPERIAL / METRIC HANDMADE	74	TECHNICAL INFORMATION
48	LIGHTLY WEATHERED WATERSTRUCK	76	SUSTAINABILITY
52	3" RECLAMATION ORANGE WIRECUT	77	MANUFACTURE
53	2 ¹ / ₂ " RECLAMATION ORANGE WIRECUT		
54	3" RECLAMATION PRE WAR BANDED WIRECUT		
55	3" WEATHERED PRE WAR BANDED WIRECUT		
56	3" PRE WAR BANDED WIRECUT		
57	WEATHERED PRE WAR COMMON		
58	PRE WAR COMMON		
60	SPECIAL SHAPED BRICKS		
62	BRICK SLIPS		
64	IMPERIAL BRICK TILES		



68mm Country Blend, Herefordshire



THE IMPERIAL BRICKS RANGE

Our growing family of products has been specially developed to suit a wide variety of projects across the UK, so whether you're refurbishing a listed building, extending a pre-war property or creating a contemporary new build, we have a solution to suit.

- **IMPERIAL BRICKS**

Bringing an authentic touch to any building project, our imperial bricks range from 2" (50mm) to 3" (75mm) in height, making them perfect for the restoration, renovation and conservation of period properties, as well as adding character and charm to any new build development.

- **METRIC BRICKS**

Slightly smaller than their traditional imperial counterparts, our metric bricks still provide the same variety and limitless depth of character, in a standard size of 215 x 102.5 x 65mm.

- **BRICK SLIPS**

A quick and easy way to bring the look and feel of an authentic exposed brick wall to any building project.

- **PAVERS**

Indoors or out, brick paving makes an attractive and hardwearing traditional flooring material.

- **SPECIALS**

Ideal for capping walls or decorative detailing, available as standard specials as well as bespoke solutions.

- **LIME MORTAR**

A natural accompaniment to handmade bricks with many unique advantageous properties over cement.



68mm Yellow Stock, London



3" Pre War Banded Wirecut, Nottingham



OUR SERVICES

We work closely with our clients to ensure the perfect brick is selected every time, offering a highly-personalised service from specification right through to delivery to site. Assisting you in choosing the correct brick for the job is always our priority.

- **EXPERT BRICK MATCHING**

A free, personalised brick matching service is always available from our experienced team.

- **BRICK TINTING**

We carry out remedial colour treatment and tinting of brickwork and mortar to match existing elevations perfectly.

- **BRICK CUTTING**

A comprehensive range of BS Standard Profiles as well as bespoke special shapes can be supplied from any of our bricks to meet specific requirements.

- **BESPOKE WEATHERING**

Bespoke bricks are our speciality and all of our bricks can be tailored to specification using our unique in-house custom ageing and weathering techniques to suit project requirements.

- **CUSTOM BLENDS**

We can custom blend bricks from across our ranges, creating hand-picked bespoke blends tailored to each project.

- **FREE SAMPLES**

Our sample service enables you to assess brick colours, blends, sizes and textures for suitability against existing brickwork or the surrounding area.



2½" Georgian, Shropshire



Blend of 68mm Yellow Stock and Reclamation Yellow Stock, London



68mm Cambridge Buff, Oxfordshire



BRICK TYPES

We have several different brick types available, with each offering their own features and characteristics:

- **HANDMADE BRICKS**

Made using time-honoured methods dating back to the 15th century, our handmade bricks are thrown by hand into moulds. The manual process gives each brick its own unique individual texture, known as creases or 'smiles', which is an attractive and sought-after feature. Most handmade bricks also have an indent or 'frog' in the top of the brick.

- **WATERSTRUCK BRICKS**

Also known as 'slop moulded bricks', waterstruck bricks are made using water to release the clay from the mould instead of sand. Along with the slightly wetter clay mix used, this gives them a soft, distinctive appearance.

- **WIRECUT BRICKS**

Also known as extruded bricks, the process involves the extrusion of a clay column through a die, with bricks being cut by wire, resulting in a smoother, more uniform appearance. The bricks can be perforated or solid.

- **PRESSED BRICKS**

Machine made by pressing the clay into steel moulds with a hydraulic press, these bricks are durable and hardwearing, with a consistent finish.



HANDMADE BRICKS



WATERSTRUCK BRICKS



WIRECUT BRICKS



PRESSED BRICKS



DID YOU KNOW...?

- Before 1965 and the introduction of the standard metric sized brick, all bricks produced in the UK were created using imperial measurements. That's why using imperial bricks for the restoration or extension of properties built before this time is vital.
- The regional variation of bricks was originally created due to a lack of transport links - local clays were used for brick production which dictated the colours used. Those regional colours are now often a conservation requirement.
- After the Great Fire of London in 1666, an Act of Parliament was introduced to stipulate more durable building materials for house construction, which led to an increase in brick production.
- The first bricks produced were a lot smaller and slimmer in size. When the brick tax was introduced in 1784, manufacturers increased their brick sizes to compensate.
- Handmade bricks stand the test of time, with many 15th and 16th century buildings still around today. The open pore structure of handmade bricks is naturally durable, allowing water to enter and escape without damaging the face or structural integrity of the bricks. The use of lime mortars is also a major factor contributing to the longevity of brickwork, allowing buildings to flex and move and its natural self healing properties enabling any movement cracks within the mortar to repair themselves.



68mm Country Blend, Grade II Listed Master's House, Ledbury



BRICK MATCHER APP

CHOOSE THE RIGHT BRICK WITH OUR BRICK MATCHER APP

Need to match brickwork whilst on site or from the office? Sourcing the right brick couldn't be easier with our free interactive mobile app which offers a handy pocket-sized guide to our complete range of brick products.

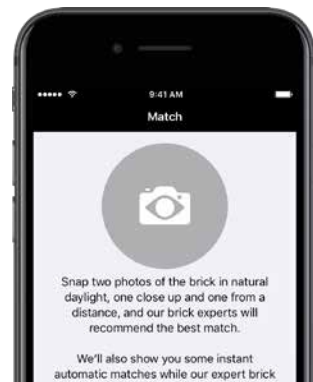
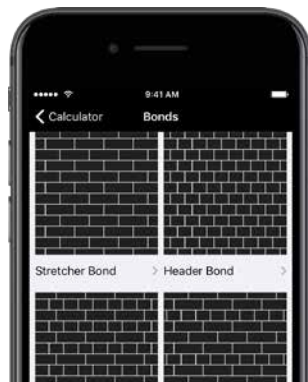
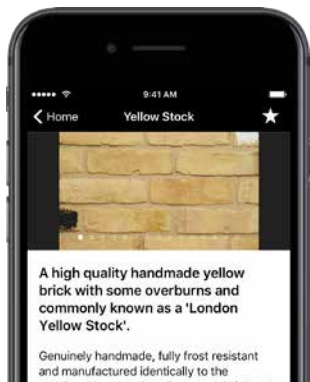
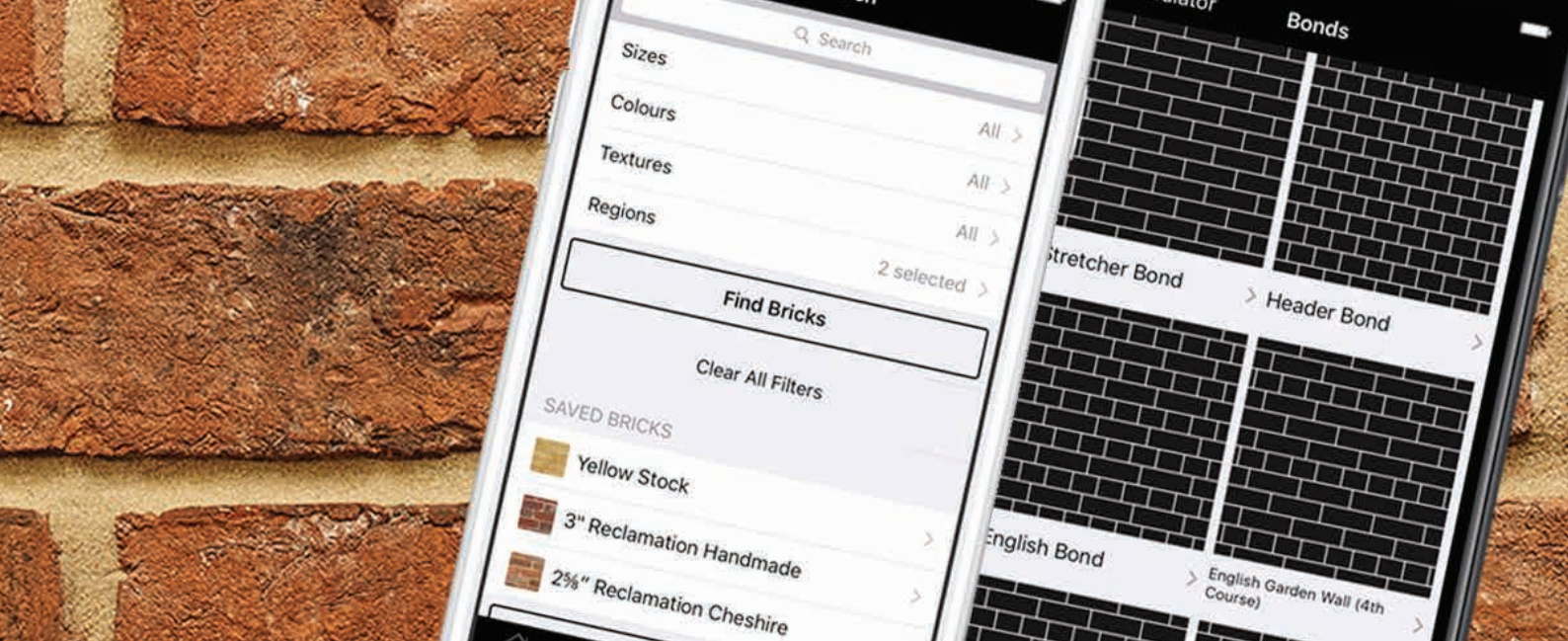
Whether trying to find bricks to match existing brickwork on a refurb project or looking for bricks which add character to a new build, the Brick Matcher App from Imperial Bricks is a fully interactive tool to help architects, merchants, developers and self-builders identify the right brick for their projects, with many convenient features:

- Search for a brick by name, colour, texture, size or geographical location
- Upload a picture of existing brickwork for a quick brick match
- Use the built-in brick calculator which features different sizes and brickwork bonds
- Quickly source and compare bricks
- Request samples, brochures or a site visit and easily register sites online



Brick Matcher is available free of charge for mobile devices.







REGIONAL VARIATIONS

In the UK, there are many regional variations of brick influenced by the lack of transport links, local clays and architectural trends down the ages.

We produce a range of bricks to expertly replicate these traditional colours and textures in both imperial and metric sizes, making them the perfect choice for restoration and conservation work, as well as enabling new build developments to have an instantly traditional look.

Some of the best known traditional regional variations are:



SOFT RED

Made from red sandy clay found in the south, these vivid bricks were used in royal buildings and Georgian townhouses in Southern England throughout the 17th century. They were known as 'Red Rubbers' because their soft texture made them ideal for carving.



LONDON STOCK

London clay produced the traditional 'Yellow Stock' handmade brick, used extensively during the capital's building boom in the late 18th and 19th centuries. Colours vary from a dark gold to pastel yellow, with black flecks from the ash in the clay.



CAMBRIDGE BUFF

The clay which originated from Cambridge and surrounding areas was a stiff and water retentive gault / buff white clay with a high lime content. This produced high quality, dense grey, buff or white bricks, used predominantly for facing work.



FARMHOUSE ORANGE

Clays from around the Midlands and North predominantly produced bricks ranging from a soft, light shade to a strong mid orange. These are often seen on rural farm buildings and have been popular throughout middle England since the 17th century.



ORANGE WIRECUT

A true brick of the Shire counties with characteristic orange hues and buff flashing, this brick has been widely used in all types of development from the 19th century to the present day.



REGIONAL VARIATIONS

We have provided a simple guide to assist in identifying which bricks are most suited to specific areas, by collating them into regional colour-coded groups.

This is by no means a definite authority but is designed to be used as an easy reference tool.

The suitability of a brick can of course vary outside of these suggested areas and a number of bricks are suitable for most parts of the UK.

NATIONAL

- Midlands & Wales
- London
- North
- Central South
- East Anglia
- South/Home Counties

NORTH

- Northumberland
- Tyne & Wear
- Durham
- Cleveland
- Cumbria
- Yorkshire
- Lancashire
- Merseyside
- Cheshire
- GMC

MIDLANDS & WALES

- Derbyshire
- Nottinghamshire
- Staffordshire
- Leicestershire
- Lincolnshire
- West Midlands
- Warwickshire
- Shropshire
- Hereford & Worcs
- Powys
- Gwent
- Clwyd
- Gwnedd
- Dyfed
- The Vale of Glamorgan

LONDON

- North London
- South London

CENTRAL SOUTH

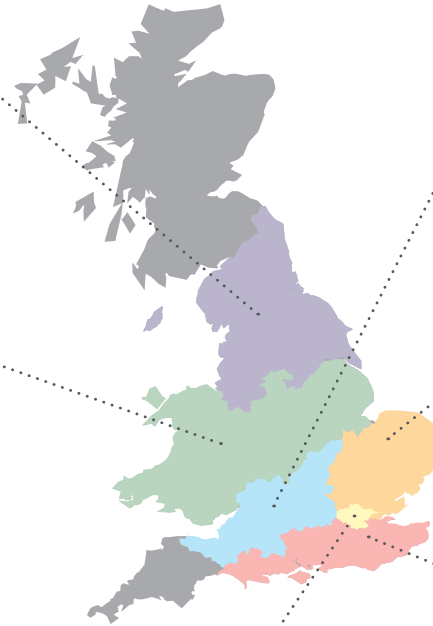
- Northamptonshire
- Buckinghamshire
- Berkshire
- Oxfordshire
- Wiltshire
- Gloucestershire
- Avon
- Somerset

EAST ANGLIA

- Bedfordshire
- Hertfordshire
- Essex
- Cambridgeshire
- Norfolk
- Suffolk

SOUTH/HOME COUNTIES

- Dorset
- Hampshire
- Surrey
- Sussex
- Kent





68mm Reclamation Yellow Stock, London



ORIGINAL LONDON STOCK

A high quality yellow handmade brick, boasting a strong colour with an authentic and unique coal spotted face, this brick offers a true reproduction of the traditional London bricks.

TECHNICAL SPECIFICATION

SIZE:

IMPERIAL: 9 x 4¼ x 2¾"
230 x 110 x 68mm

METRIC: 215 x 102.5 x 65mm*

SOLUBLE SALT

CLASSIFICATION: S1

COMPRESSIVE STRENGTH:

15.7n/mm²

WATER ABSORPTION: 21%

RANGE: R1/*RM

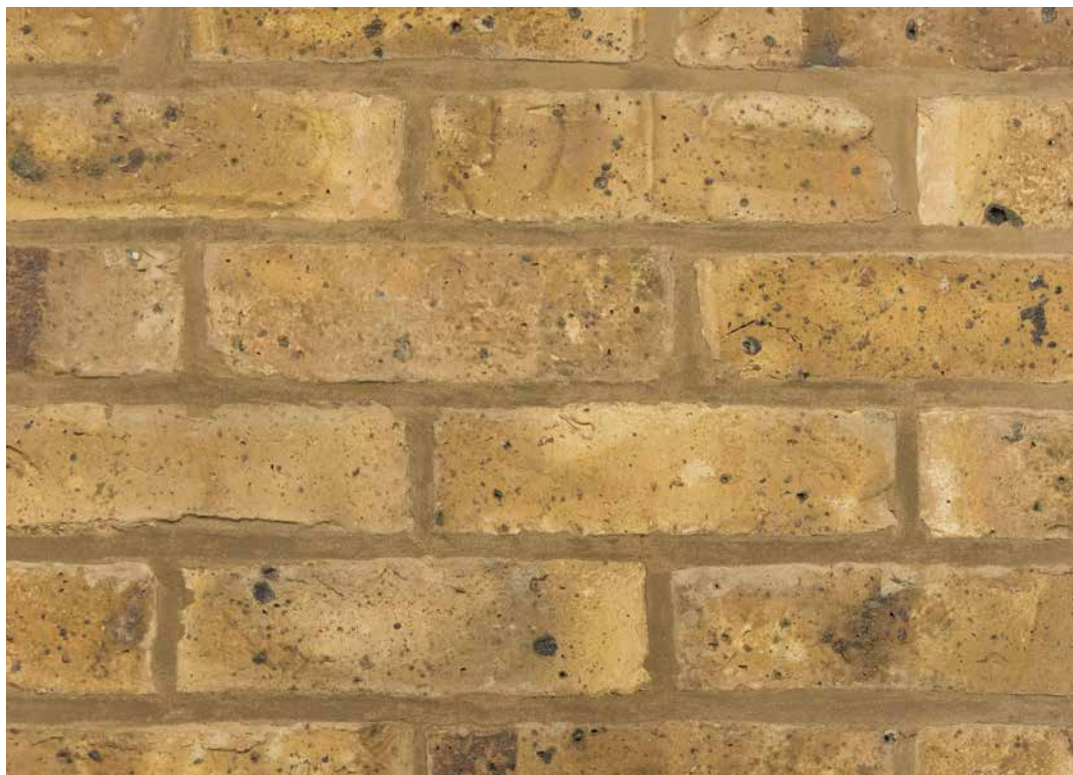
TOLERANCE: T1/*TM

FREEZE THAW: F2

WEIGHT: 2.10/1.80kg

PACK SIZE: 540/560

TYPE: Handmade



Please see guidance on efflorescence in
Technical Information



RECLAMATION YELLOW STOCK



Our Yellow Stock undergoes an ageing process to change the appearance to that of a genuine reclaimed Yellow Stock brick with a stronger mustard colour with soot engrained on the face and traces of mortar residue.

TECHNICAL SPECIFICATION

SIZE:

IMPERIAL: 9 x 4¼ x 2¾"
228 x 108 x 68mm

METRIC: 215 x 102.5 x 65mm

SOLUBLE SALT

CLASSIFICATION: S1

COMPRESSIVE STRENGTH:

20.9n/mm²

WATER ABSORPTION: 20%

RANGE: RM

TOLERANCE: TM

FREEZE THAW: F2

WEIGHT: 2.38 / 2.08kg

PACK SIZE: 560

TYPE: Handmade



Please see guidance on efflorescence in
Technical Information



RECLAMATION YELLOW MULTI STOCK

Historically popular around North London, this brick includes red and pink blended with our Reclamation Yellows. The amount of each colour can be tailored to customer requirements.

TECHNICAL SPECIFICATION

SIZE:

IMPERIAL: 9 x 4¼ x 2¾"
228 x 108 x 68mm

SOLUBLE SALT

CLASSIFICATION: S1

COMPRESSIVE STRENGTH:

20.9n/mm²

WATER ABSORPTION: 20%

RANGE: RM

TOLERANCE: TM

FREEZE THAW: F2

WEIGHT: 2.38kg

PACK SIZE: 560

TYPE: Handmade



Please see guidance on efflorescence in
Technical Information



YELLOW STOCK



Known as a 'London Yellow Stock', these bricks have been extensively used in London and the surrounding counties since the 17th century.

Supplied with some white and black faces which are reversible to create the desired blend.

TECHNICAL SPECIFICATION

SIZE:

IMPERIAL: 9 x 4¼ x 2¾"
228 x 108 x 68mm

METRIC: 215 x 102.5 x 65mm

SOLUBLE SALT CLASSIFICATION:
S1

COMPRESSIVE STRENGTH:
20.9n/mm²

WATER ABSORPTION: 20%

RANGE: RM

TOLERANCE: TM

FREEZE THAW: F2

WEIGHT: 2.38 / 2.00kg

PACK SIZE: 540

TYPE: Handmade



Please see guidance on efflorescence in
Technical Information



YELLOW MULTI STOCK

Dating back to the early 19th century, these characteristic red and pink toned bricks were a signature building material throughout London and the South East of England.

TECHNICAL SPECIFICATION

SIZE:

IMPERIAL: 9 x 4¼ x 2¾"
228 x 108 x 68mm

SOLUBLE SALT

CLASSIFICATION: S1

COMPRESSIVE STRENGTH:

20.9n/mm²

WATER ABSORPTION: 20%

RANGE: RM

TOLERANCE: TM

FREEZE THAW: F2

WEIGHT: 2.38kg

PACK SIZE: 560

TYPE: Handmade



Please see guidance on efflorescence in
Technical Information



RECLAMATION CAMBRIDGE BUFF



These bricks are carefully put through a series of processes to give a subtle aged appearance. When old, they exhibit a slight weathered grey appearance.

TECHNICAL SPECIFICATION

SIZE:

IMPERIAL: 9 x 4¼ x 2¼"
228 x 108 x 68mm

METRIC: 215 x 102.5 x 65mm

**SOLUBLE SALT
CLASSIFICATION:** S2

COMPRESSIVE STRENGTH:
26.2n/mm²

WATER ABSORPTION: 19%

RANGE: R1

TOLERANCE: T2

FREEZE THAW: F2

WEIGHT: 2.50kg

PACK SIZE: 560

TYPE: Handmade





CAMBRIDGE BUFF

A soft, creamy yellow brick produced from gault clay and used historically in prestigious buildings for very high quality facing work in Cambridge, London, Suffolk and the home counties.

Also commonly known as a Suffolk White.

TECHNICAL SPECIFICATION

SIZE:

IMPERIAL: 9 x 4¼ x 2¾"
228 x 108 x 68mm

METRIC: 215 x 102.5 x 65mm

SOLUBLE SALT

CLASSIFICATION: S2

COMPRESSIVE STRENGTH:

26.2n/mm²

WATER ABSORPTION: 19%

RANGE: R1

TOLERANCE: T2

FREEZE THAW: F2

WEIGHT: 2.50kg

PACK SIZE: 585

TYPE: Handmade





RESTORATION OXFORD YELLOW MULTI WATERSTRUCK



A high quality pale waterstruck brick with a weathered finish which is an ideal alternative to reclaimed bricks from the Oxfordshire and East Anglia areas.

TECHNICAL SPECIFICATION

SIZE:

IMPERIAL: 9 x 4¼ x 2¾"
228 x 108 x 68mm

SOLUBLE SALT

CLASSIFICATION: S2

COMPRESSIVE STRENGTH:

12.9n/mm²

WATER ABSORPTION: 13%

RANGE: R1

TOLERANCE: T2

FREEZE THAW: F2

WEIGHT: 2.70kg

PACK SIZE: 540

TYPE: Waterstruck





OXFORD YELLOW MULTI WATERSTRUCK

A high quality pale brick with pink and orange tones, this waterstruck or 'slop moulded' brick offers a relatively smooth appearance due to its manufacturing process.

This type of brick is popular across Oxfordshire, Cambridgeshire and the East Coast.

TECHNICAL SPECIFICATION

SIZE:

IMPERIAL: 9 x 4¼ x 2¾"
228 x 108 x 68mm

SOLUBLE SALT

CLASSIFICATION: S2

COMPRESSIVE STRENGTH:

12.9n/mm²

WATER ABSORPTION: 13%

RANGE: R1

TOLERANCE: T2

FREEZE THAW: F2

WEIGHT: 2.70kg

PACK SIZE: 540

TYPE: Waterstruck





OLD JACOBEOAN BUFF MULTI



A pink/yellow multi handmade brick manufactured in a wooden mould to give a traditional appearance.

TECHNICAL SPECIFICATION

SIZE:
METRIC: 215 x 102.5 x 65mm

SOLUBLE SALT
CLASSIFICATION: S2

COMPRESSIVE STRENGTH:
30.3n/mm²

WATER ABSORPTION: 22%

RANGE: R1

TOLERANCE: T2

FREEZE THAW: F1

WEIGHT: 1.90kg

PACK SIZE: 540

TYPE: Handmade





RECLAMATION SOFT RED

Our handmade Soft Reds are put through an ageing process to give them an identical appearance to genuine reclaimed bricks.

TECHNICAL SPECIFICATION

SIZE:

IMPERIAL: 9 x 4¼ x 2¼"
228 x 108 x 68mm

SOLUBLE SALT

CLASSIFICATION: S2

COMPRESSIVE STRENGTH:

10.5n/mm²

WATER ABSORPTION: 13%

RANGE: R2

TOLERANCE: T2

FREEZE THAW: F2

WEIGHT: 2.57kg

PACK SIZE: 540

TYPE: Handmade





WEATHERED SOFT RED



A traditional Soft Red handmade brick with a weathered finish for an instantly aged appearance, which is ideal for matching up to existing brickwork especially in urban areas.

TECHNICAL SPECIFICATION

SIZE:
IMPERIAL: 9 x 4¼ x 2¾"
228 x 108 x 68mm

SOLUBLE SALT
CLASSIFICATION: S2

COMPRESSIVE STRENGTH:
10.5n/mm²

WATER ABSORPTION: 13%

RANGE: R2

TOLERANCE: T2

FREEZE THAW: F2

WEIGHT: 2.57kg

PACK SIZE: 540

TYPE: Handmade





SOFT RED

Also known as a 'Red Rubber', this soft textured brick with subtle colour variations has slight creasing on the faces of the bricks.

It was used extensively across Southern England from the 17th century.

TECHNICAL SPECIFICATION

SIZE:

IMPERIAL: 9 x 4¼ x 2¾"
228 x 108 x 68mm

METRIC: 215 x 102.5 x 65mm

SOLUBLE SALT

CLASSIFICATION: S2

COMPRESSIVE STRENGTH:

10.5n/mm²

WATER ABSORPTION: 13%

RANGE: R2

TOLERANCE: T2

FREEZE THAW: F2

WEIGHT: 2.57 / 2.31kg

PACK SIZE: 540

TYPE: Handmade





SOFT RED MULTI



This characterful Soft Red is fired at a higher than average temperature to produce a slightly darker shade of red with contrasting overburns, reproducing the look of bricks used extensively in the industrial revolution.

TECHNICAL SPECIFICATION

SIZE:

IMPERIAL: 9 x 4 1/4 x 2 3/4"
228 x 108 x 68mm

METRIC: 215 x 102.5 x 65mm

SOLUBLE SALT

CLASSIFICATION: S2

COMPRESSIVE STRENGTH:

10.5n/mm²

WATER ABSORPTION: 13%

RANGE: R2

TOLERANCE: T2

FREEZE THAW: F2

WEIGHT: 2.57kg

PACK SIZE: 540/600

TYPE: Handmade





2¼" SOFT RED

A rural favourite since the 16th century, these solid bricks with slight creasing and soft red shades are found in period properties across Southern and Eastern England.

TECHNICAL SPECIFICATION

SIZE:

IMPERIAL: 9 x 4¼ x 2¼"
228 x 108 x 57mm

SOLUBLE SALT

CLASSIFICATION: S2

COMPRESSIVE STRENGTH:

10.5n/mm²

WATER ABSORPTION: 13%

RANGE: R2

TOLERANCE: T2

FREEZE THAW: F2

WEIGHT: 2.00kg

PACK SIZE: 612

TYPE: Handmade





RESTORATION RED WATERSTRUCK



A weathered version of the Red Waterstruck, this brick is ideal for matching up to existing brickwork which has naturally weathered over time.

TECHNICAL SPECIFICATION

SIZE:

IMPERIAL: 9 x 4¼ x 2¾"
228 x 108 x 68mm

SOLUBLE SALT

CLASSIFICATION: S2

COMPRESSIVE STRENGTH:

12.9n/mm²

WATER ABSORPTION: 13%

RANGE: R1

TOLERANCE: T2

FREEZE THAW: F2

WEIGHT: 2.70kg

PACK SIZE: 540

TYPE: Waterstruck





RED WATERSTRUCK

A genuinely handmade red brick with a relatively smooth finish, displaying characterful shade variations.

TECHNICAL SPECIFICATION

SIZE:

IMPERIAL: 9 x 4¼ x 2¾"
228 x 108 x 68mm

SOLUBLE SALT

CLASSIFICATION: S2

COMPRESSIVE STRENGTH:

12.9n/mm²

WATER ABSORPTION: 13%

RANGE: R1

TOLERANCE: T2

FREEZE THAW: F2

WEIGHT: 2.70kg

PACK SIZE: 540

TYPE: Waterstruck





HERITAGE SOFT ORANGE



A soft, finely textured orange handmade brick which is suitable for large areas of the UK.

TECHNICAL SPECIFICATION

SIZE:

IMPERIAL: 9 x 4¼ x 2¾"
228 x 108 x 68mm

METRIC: 215 x 102.5 x 65mm

SOLUBLE SALT

CLASSIFICATION: S2

COMPRESSIVE STRENGTH:

13.5n/mm²

WATER ABSORPTION: 15%

RANGE: R1

TOLERANCE: T2

FREEZE THAW: F2

WEIGHT: 2.57 / 2.31kg

PACK SIZE: 540/612

TYPE: Handmade





68mm Farmhouse Orange, Kent



RECLAMATION SHIRE BLEND



An ideal replacement for reclaimed handmade bricks salvaged from the demolition of old farm buildings, this reclamation brick is characterised by red/orange shades weathered with soot and grime with additional traces of lime mortar.

TECHNICAL SPECS

SIZE:

IMPERIAL: 9 x 4¼ x 2¾"
230 x 110 x 68mm

METRIC: 215 x 102.5 x 65mm

SOLUBLE SALT

CLASSIFICATION: S2

COMPRESSIVE STRENGTH:

30n/mm²

WATER ABSORPTION: 15%

RANGE: R1

TOLERANCE: T1

FREEZE THAW: F2

WEIGHT: 2.89 / 2.01kg

PACK SIZE: 525/650

TYPE: Handmade





URBAN WEATHERED

An exclusive handmade brick which replicates the weathered appearance that the handmade bricks used in yesteryear in urban areas gain over time.

TECHNICAL SPECS

SIZE:

IMPERIAL: 9 x 4¼ x 2¾"
230 x 110 x 68mm

METRIC: 215 x 102.5 x 65mm

SOLUBLE SALT

CLASSIFICATION: S2

COMPRESSIVE STRENGTH:

30n/mm²

WATER ABSORPTION: 15%

RANGE: R1

TOLERANCE: T1

FREEZE THAW: F2

WEIGHT: 2.89 / 2.01kg

PACK SIZE: 525/650

TYPE: Handmade





OLDE RECLAMATION CLAMP



A highly attractive and characterful brick with red/orange shades which has been created to replicate the traditional handmade bricks often found in historic towns across Yorkshire, Lincolnshire and Cheshire.

TECHNICAL SPECIFICATION

SIZE:

IMPERIAL: 9 x 4¼ x 2¾"
230 x 110 x 68mm
9 x 4¼ x 3"
230 x 110 x 73mm

METRIC: 215 x 102.5 x 65mm

SOLUBLE SALT

CLASSIFICATION: S2

COMPRESSIVE STRENGTH:

30n/mm²

WATER ABSORPTION: 15%

RANGE: R1

TOLERANCE: T1

FREEZE THAW: F2

WEIGHT: 2.89 / 2.01kg

PACK SIZE: 525/650

TYPE: Handmade





COUNTRY BLEND

An orange/red handmade brick with subtle weathering to give an instantly established look, these bricks were used extensively for rural buildings over the centuries throughout the Shire counties.

TECHNICAL SPECIFICATION

SIZE:

IMPERIAL: 9 x 4¼ x 2¾"
230 x 110 x 68mm

METRIC: 215 x 102.5 x 65mm

SOLUBLE SALT

CLASSIFICATION: S2

COMPRESSIVE STRENGTH:

30n/mm²

WATER ABSORPTION: 15%

RANGE: R1

TOLERANCE: T1

FREEZE THAW: F2

WEIGHT: 2.89 / 2.01kg

PACK SIZE: 525/650

TYPE: Handmade





FARMHOUSE ORANGE



A high quality orange/red blended handmade brick that was historically used in period properties such as barns and farmhouses throughout the Shire counties.

TECHNICAL SPECIFICATION

SIZE:

IMPERIAL: 9 x 4¼ x 2¾"
230 x 110 x 68mm
9 x 4¼ x 3"
230 x 110 x 73mm

METRIC: 215 x 102.5 x 65mm

SOLUBLE SALT

CLASSIFICATION: S2

COMPRESSIVE STRENGTH:

30n/mm²

WATER ABSORPTION: 15%

RANGE: R1

TOLERANCE: T1

FREEZE THAW: F2

WEIGHT: 2.89 / 2.01kg

PACK SIZE: 525/650

TYPE: Handmade





2" TUDOR MULTI

Typically used in building very old properties from the 15th/16th centuries, these solid orange/red handmade 2" bricks are equally popular as pavers for period and historical properties.

TECHNICAL SPECIFICATION

SIZE:

IMPERIAL: 9 x 4¼ x 2"
230 x 110 x 50mm

SOLUBLE SALT

CLASSIFICATION: S2

COMPRESSIVE STRENGTH:

30n/mm²

WATER ABSORPTION: 15%

RANGE: R1

TOLERANCE: T1

FREEZE THAW: F2

WEIGHT: 2.35kg

PACK SIZE: 600

TYPE: Handmade





2 5/8" Reclamation Cheshire, Staffordshire



2 $\frac{5}{8}$ " RECLAMATION CHESHIRE

A high quality rustic handmade brick which undergoes a special ageing and weathering process to achieve a reclamation finish, resulting in an identical appearance to genuine reclaimed bricks.

This is a very attractive and characterful facing brick featuring shades of red, orange and plum.

TECHNICAL SPECIFICATION

SIZE:

IMPERIAL: 9 x 4 $\frac{1}{2}$ x 2 $\frac{5}{8}$ "
228 x 114 x 65mm

SOLUBLE SALT

CLASSIFICATION: S2

COMPRESSIVE STRENGTH:

30n/mm²

WATER ABSORPTION: 11%

RANGE: R1

TOLERANCE: T1

FREEZE THAW: F2

WEIGHT: 3.40kg

PACK SIZE: 500

TYPE: Handmade





2½" RECLAMATION GEORGIAN



Just like our handmade Soft Reds, these attractive facing bricks undergo an ageing process to give them an identical appearance to genuine reclaimed bricks of the Georgian era.

TECHNICAL SPECIFICATION

SIZE:

IMPERIAL: 9 x 4½ x 2½"
228 x 114 x 65mm

SOLUBLE SALT

CLASSIFICATION: S2

COMPRESSIVE STRENGTH:

30n/mm²

WATER ABSORPTION: 11%

RANGE: R1

TOLERANCE: T1

FREEZE THAW: F2

WEIGHT: 3.20kg

PACK SIZE: 500

TYPE: Handmade





2½" GEORGIAN

Georgian handmade bricks were extensively used in towns and rural areas throughout the late 17th and early 18th centuries, displaying a colour spectrum ranging from plum to oranges and soft reds.

TECHNICAL SPECIFICATION

SIZE:

IMPERIAL: 9 x 4½ x 2½"
228 x 114 x 65mm

SOLUBLE SALT

CLASSIFICATION: S2

COMPRESSIVE STRENGTH:

30n/mm²

WATER ABSORPTION: 11%

RANGE: R1

TOLERANCE: T1

FREEZE THAW: F2

WEIGHT: 3.20kg

PACK SIZE: 576

TYPE: Handmade





3" IMPERIAL / METRIC RECLAMATION HANDMADE



A rustic red multi handmade brick with a reclamation finish which offers an ideal, high quality alternative to reclaimed bricks salvaged from buildings around the Midlands and North.

TECHNICAL SPECIFICATION

SIZE:

IMPERIAL: 9 x 4¼ x 3"
230 x 108 x 73mm

METRIC: 215 x 102.5 x 65mm

SOLUBLE SALT
CLASSIFICATION: S2

COMPRESSIVE STRENGTH:
36.3n/mm²

WATER ABSORPTION: 12%

RANGE: R1

TOLERANCE: T1

FREEZE THAW: F2

WEIGHT: 3.25 / 2.60 kg

PACK SIZE: 400

TYPE: Handmade



Please be aware that headers may appear significantly lighter in colour due to the firing process.



3" IMPERIAL / METRIC HANDMADE

Our 3" Handmade is a rustic red multi brick which perfectly matches bricks historically found on traditional buildings around the Midlands and North of England.

TECHNICAL SPECIFICATION

SIZE:

IMPERIAL: 9 x 4¼ x 3"
230 x 108 x 73mm

METRIC: 215 x 102.5 x 65mm

SOLUBLE SALT

CLASSIFICATION: S2

COMPRESSIVE STRENGTH:

36.3n/mm²

WATER ABSORPTION: 12%

RANGE: R1

TOLERANCE: T1

FREEZE THAW: F2

WEIGHT: 3.15 / 2.60 kg

PACK SIZE: 480

TYPE: Handmade



Please be aware that headers may appear significantly lighter in colour due to the firing process.



LIGHTLY WEATHERED WATERSTRUCK



A genuine handmade 3" high quality red brick with a lightly weathered appearance and a relatively smooth finish.

This type of brick historically features on properties across the North and Midlands regions.

TECHNICAL SPECIFICATION

SIZE:

IMPERIAL: 9 x 4¼ x 3"
228 x 108 x 73mm

SOLUBLE SALT

CLASSIFICATION: S2

COMPRESSIVE STRENGTH:

12.9n/mm²

WATER ABSORPTION: 13%

RANGE: R1

TOLERANCE: T2

FREEZE THAW: F2

WEIGHT: 2.88kg

PACK SIZE: 504

TYPE: Waterstruck





Lightly Weathered Waterstruck, Warwickshire

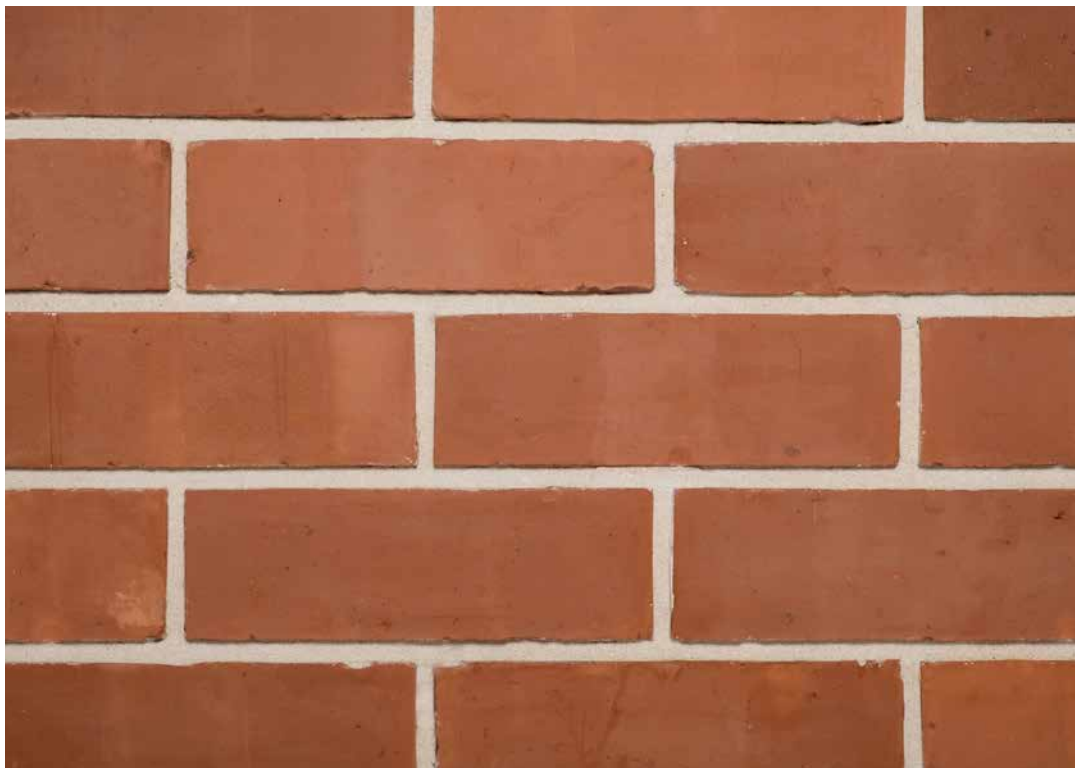


65mm Reclamation Shire Blend, Cheshire





3" RECLAMATION ORANGE WIRECUT



The most popular Victorian brick used throughout the Midlands in the Shire counties, in both private and public sector buildings. Manufactured by cutting an extruded ribbon of clay by wire, hence the name, they are typically shades of red to orange.

TECHNICAL SPECIFICATION

SIZE:

IMPERIAL: 9 x 4¼ x 3"
228 x 108 x 73mm

SOLUBLE SALT
CLASSIFICATION: TBC

COMPRESSIVE STRENGTH:
TBC

WATER ABSORPTION: TBC

RANGE: TBC

TOLERANCE: TBC

FREEZE THAW: TBC

WEIGHT: 3.10kg

PACK SIZE: 495

TYPE: Wirecut





2½" RECLAMATION ORANGE WIRECUT

Manufactured using traditional extrusion methods, the attractive red to orange shading of these bricks is commonly seen across Southern England.

TECHNICAL SPECIFICATION

SIZE:

IMPERIAL: 9 x 4¼ x 2½"
228 x 108 x 65mm

SOLUBLE SALT

CLASSIFICATION: TBC

COMPRESSIVE STRENGTH:

TBC

WATER ABSORPTION: TBC

RANGE: TBC

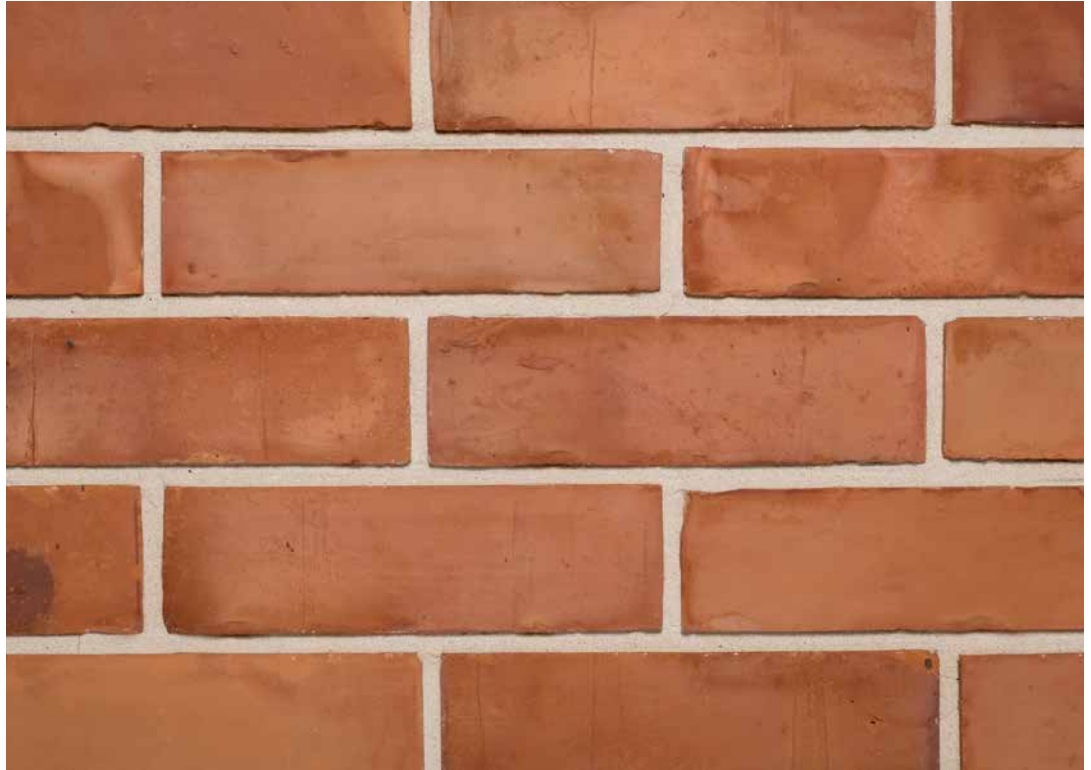
TOLERANCE: TBC

FREEZE THAW: TBC

WEIGHT: 3.04kg

PACK SIZE: 540

TYPE: Wirecut





3" RECLAMATION PRE WAR BANDED WIRECUT



A solid reclamation-style wirecut brick which is very popular across Cheshire, the Midlands and North, offering an ideal high quality alternative to reclaimed bricks.

TECHNICAL SPECIFICATION

SIZE:
IMPERIAL: 9 x 4¼ x 3"
228 x 108 x 73mm

SOLUBLE SALT
CLASSIFICATION: S2

COMPRESSIVE STRENGTH:
40n/mm²

WATER ABSORPTION: 14%

RANGE: R2

TOLERANCE: T2

FREEZE THAW: F2

WEIGHT: 3.00kg

PACK SIZE: 400

TYPE: Wirecut





3" WEATHERED PRE WAR BANDED WIRECUT

A banded wirecut brick which displays a naturally weathered finish, ideal for matching existing brickwork.

TECHNICAL SPECIFICATION

SIZE:

IMPERIAL: 9 x 4¼ x 3"
228 x 108 x 73mm

SOLUBLE SALT

CLASSIFICATION: S2

COMPRESSIVE STRENGTH:

40n/mm²

WATER ABSORPTION: 14%

RANGE: R2

TOLERANCE: T2

FREEZE THAW: F2

WEIGHT: 3.00kg

PACK SIZE: 495

TYPE: Wirecut





3" PRE WAR BANDED WIRECUT



Found mainly in the North West of England, these extruded, wirecut Victorian bricks display characteristic pale flashings through the orange clay body.

TECHNICAL SPECIFICATION

SIZE:
IMPERIAL: 9 x 4¼ x 3"
228 x 108 x 73mm

SOLUBLE SALT
CLASSIFICATION: S2

COMPRESSIVE STRENGTH:
40n/mm²

WATER ABSORPTION: 14%

RANGE: R2

TOLERANCE: T2

FREEZE THAW: F2

WEIGHT: 3.00kg

PACK SIZE: 495

TYPE: Wirecut





WEATHERED PRE WAR COMMON

A pressed brick with a characteristic red and orange base, pale flashings and dark 'overburns', displaying a naturally weathered appearance.

TECHNICAL SPECIFICATION

SIZE:

METRIC: 215 x 102.5 x 65mm

SOLUBLE SALT
CLASSIFICATION: S2

COMPRESSIVE STRENGTH:
44.8n/mm²

WATER ABSORPTION: 22%

RANGE: R2

TOLERANCE: T2

FREEZE THAW: F1

WEIGHT: 2.20kg

PACK SIZE: 540

TYPE: Pressed





PRE WAR COMMON



These hydraulically-pressed bricks were widely used in 19th century terraced housing across North West England. They feature a characteristic red and orange base, pale flashings and dark 'overburns'.

TECHNICAL SPECIFICATION

SIZE:

METRIC: 215 x 102.5 x 65mm

SOLUBLE SALT
CLASSIFICATION: S2

COMPRESSIVE STRENGTH:
44.8n/mm²

WATER ABSORPTION: 22%

RANGE: R2

TOLERANCE: T2

FREEZE THAW: F1

WEIGHT: 2.20kg

PACK SIZE: 540

TYPE: Pressed





Blend of 68mm Yellow Stock and Reclamation Yellow Stock, London



SPECIAL SHAPED BRICKS

Specials are used in a wide variety of ways. They add durability and protection to brickwork and save time on site, as well as offering the option to create more distinctive features.

STANDARD SPECIALS

Our range of standard imperial-sized handmade Soft Red specials are available in a regular and reclamation finish for an aged appearance.



HALF ROUND COPING

Half round copings are the traditional way to cap parapet and freestanding walls.



TRIANGULAR COPING

Triangular or Saddleback Copings offer a decorative finish to parapet and freestanding walls whilst helping to reduce water penetration and saturation of the brickwork below.



PLINTH STRETCHER

Featuring a chamfered face at a 45° angle, plinth stretchers are used for detailing work, cills, creating plinths or making changes in the depth of a wall.



BLUE HEADERS

Blue headers were traditionally laid into walls, mixed generally with a Soft Red brick and a very common feature throughout the Southern and Eastern parts of the UK.



SPECIAL SHAPED BRICKS

BESPOKE SPECIALS

- **SPECIALISED BRICK CUTTING**
We offer a comprehensive range of BS Standard Profiles as well as bespoke special shapes from any of our bricks to meet specific requirements.
- **PRODUCTION**
Our cut and bonded specials are mitered and bonded together to create any internal or external angle, with a sand finish added to disguise the joints. Cut and refaced bricks are cut through the face to achieve the required shape, with an Epoxy resin and natural sand applied to finish the cut face.

Our expertise in matching special shaped bricks on historical properties means we can usually offer a suitable solution.





BRICK SLIPS

Brick slips are a quick and easy way to bring the look and feel of an authentic brick wall to any residential or commercial building project.

A modern method for cladding buildings, brick slips offer an ideal solution for developers and self-builders who are looking to save time and labour costs.

The traditional handmade nature of our brick slips offers an instantly aged appearance which is very popular.

Slips are available from our entire range of bricks and are supplied in loose packs; just fix and point for an authentic finish.

We also supply matching brick corners or 'pistols' for complete coverage.





68mm Reclamation Yellow Stock brick slips, London



IMPERIAL BRICK TILES

AUTHENTIC FEATURE WALLS OF UNRIVALLED QUALITY

The new range of Brick Tiles, designed and developed exclusively by Imperial Bricks, offer the perfect way to create the highly desirable authentic reclaimed feature wall appearance.

Widely used in shops, restaurants, pubs and bars to add character, Brick Tiles are also a great way to easily customise domestic interiors.

Our Brick Tiles begin their life as full imperial-sized bricks. We then cut the face off the brick, which gives each tile its individuality, texture and character.

A highly attractive and cost-effective alternative to laboured brickwork, Brick Tiles offer the ideal solution to replicating the timeless elegance of traditional brickwork.





IMPERIAL BRICK TILES

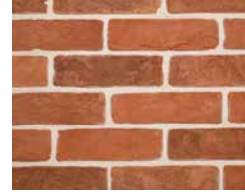
We have selected our most popular regional styles to create this exclusive range of Imperial Brick Tiles, which offer authentic feature walls to complement any project.



VICTORIAN
LIMEWASHED



VICTORIAN
FARMHOUSE



VICTORIAN
WAREHOUSE



VICTORIAN
PRESSED



VICTORIAN LONDON
STOCK



VICTORIAN CRACKLE
GLAZED - WHITE



DESIGNER LINEAR
- METALLIC BLUE



Victorian Pressed Brick Tiles



Indoors or out, brick paving makes an attractive, hardwearing alternative to traditional flooring materials.

Laid in an interlocking bond for strength and visual impact, our paving bricks create a durable surface that is ideal for driveways and garden paths. They also make a striking statement in entrance halls, kitchens and other internal spaces.

Unlike concrete paving slabs, brick pavements mature and deepen their character with age. Like all the facing bricks in our extensive range, they are highly resistant to frost damage and CE marked for quality and consistency.

So you know whether you're laying a driveway, patio area, footpath or floor, you can trust them to perform at their very best.





50MM TUDOR BRICK/PAVER



Ideal as solid brick or pavers, these orange to red bricks have been used since the 15th century for properties of distinction.

TECHNICAL SPECIFICATION

SIZE:

IMPERIAL: 9 x 4¼ x 2"
230 x 110 x 50mm

**SOLUBLE SALT
CLASSIFICATION:** S2

COMPRESSIVE STRENGTH:
30 N/MM²

WATER ABSORPTION: 15%

RANGE: R1

TOLERANCE: T1

FREEZE THAW: F2

WEIGHT: 2.35kg

PACK SIZE: 600





SUFFOLK FLOOR BRICK

Historically used in rural properties and churches across Suffolk and Norfolk, our handmade floor bricks have a slightly sanded surface and are buff coloured with pink hues. Recommended for internal use.

TECHNICAL SPECIFICATION

SIZE:

IMPERIAL: $9\frac{1}{2} \times 4\frac{3}{4} \times 2"$
240 x 120 x 50mm

SOLUBLE SALT

CLASSIFICATION: S2

COMPRESSIVE STRENGTH:

26.2 N/MM²

WATER ABSORPTION: 19%

RANGE: R1

TOLERANCE: T2

FREEZE THAW: F2

WEIGHT: 2.35kg

PACK SIZE: 560





LIME MORTAR

WHY USE HYDRAULIC LIME MORTAR?

Lime has been used in the construction of buildings for over 2000 years and can still be seen on the most iconic historical landmarks across the world, such as the Great Wall of China, the Houses of Parliament and the Rome Colosseum.

Lime mortar is a natural accompaniment to handmade bricks, not only for its attractive finish and appearance, but also because of the many unique advantageous properties over cement.



2½" Reclamation Georgian & 68mm Country Blend with lime mortar, Kent

KEY BENEFITS

- **FLEXIBILITY**
Lime mortar is weaker than bricks, masonry and stones, yet it is able to support the full weight of a structure, allowing buildings to flex and move.
- **BREATHABILITY**
Lime allows moisture to evaporate and walls to breathe.
- **ABSORBS CO₂**
When the curing process starts lime begins to re-absorb CO₂ from the atmosphere.
- **REDUCES EXPANSION JOINTS**
Using lime mortar can decrease the need for expansion joints from every 8 metres to every 20 metres.
- **SELF HEALING**
Its natural self healing ability means any movement cracks within the mortar will repair themselves.
- **AVOIDS DAMAGE TO BRICKWORK**
Any moisture within the brickwork is allowed to escape naturally, avoiding frost damage and potential 'blowing' of brick faces.





LIME MORTAR



JUST ADD WATER

- ✓ SUPERIOR QUALITY LIME MORTAR
- ✓ PRE-MIXED FOR QUALITY CONTROL AND CONSISTENCY
- ✓ BESPOKE COLOUR MATCHING AVAILABLE



NATURAL



COTSWOLD



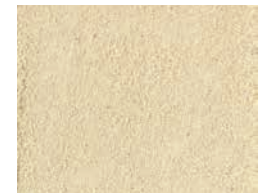
GLASGOW GREY



PADSTOW BROWN



CAMBRIDGE
DARK GREY



TRADITIONAL
LONDON



BRICK TINTING SERVICES

Brick tinting provides the perfect remedy for blending newer bricks and mortar indistinguishably with original brickwork when a suitable match isn't available or remedial work is required on site after construction.

Brick tinting achieves a naturally weathered look by applying a dye to the face of a brick which penetrates the clay and forms a permanent bond. The dyes are applied directly by 'painting' the bricks onsite, which achieves a colour alteration which will weather at the same rate as the pre-existing masonry and best of all, requires no maintenance!

We offer professional on-site masonry tinting and colour correction services.



- **ECONOMICAL COLOUR CORRECTION**
Avoid expensive rebuilding or repointing
- **SAFE TO USE**
Weathering tints contain only water based silicate and mineral pigments
- **GRADUAL WEATHERING OPTIONS**
Can be diluted to suit particular application requirements and give an aged appearance without hiding original features
- **BESPOKE COLOUR CORRECTION**
The colour of masonry can be altered with coloured brick dyes
- **BREATHABLE**
Tints do not seal the face of the brickwork which is vital to avoid damage due to trapped moisture
- **A PERMANENT SOLUTION**
Providing it is applied in accordance with the guidance, brick tints offer a permanent finish which will weather naturally with existing masonry





QUALITY

TESTED FOR LIFE

As the first defence against the elements, bricks need to be able to stand up to the harshest of conditions. That's why everything we manufacture has passed the most rigorous tests and why nothing leaves our premises without BS EN 771-1 certification.

All of our bricks are tested at Lucideon, the UK's leading testing laboratory, for the following :-

- Freeze Thaw
- Compressive Strength
- Water Absorption
- Soluble Salts
- Dimensional Tolerances

CE MARKING

CE marking is a way of showing a product complies with EU laws and standards, allowing its free movement and use across Europe. It became mandatory in July 2013.

The CE mark on our bricks is your way of telling at a glance that they are safe, standardised and fit for purpose, and our way of demonstrating that we have met all the legal standards necessary to supply our bricks across the EU.

Technical data sheets and Declaration of Performance documentation is readily available on our website.





TECHNICAL INFORMATION

VARIATIONS IN COLOUR AND TEXTURE

It is important to note that our bricks are manufactured from natural raw materials and shade variations will occur. The manufacturing process used for many of our ranges will create a naturally random weathered appearance which enhances the appearance of the bricks.

The images in this brochure are designed to be used as guidance only and whilst every effort has been made to represent brick colours and textures accurately, we always recommend you request samples for verification before placing an order.

EFFLORESCENCE

Efflorescence is a powdery deposit of salts which forms on the surface of bricks and mortar. It occurs naturally in brickwork and is a harmless and temporary seasonal problem which usually disappears by itself. Yellow bricks can be particularly prone to efflorescence and we recommend following best practice. Further guidance is available on our website.

SAMPLES

Free samples are always available, enabling you to assess brick colours, blends, sizes and textures. Please call us on 01952 750 816 or visit our website to request a sample online.

Our expert team is always happy to assist with advice and guidance to ensure you select the perfect product for your requirements.

Our samples service is based on a 3 to 5 day turnaround.

USAGE

The recommendations for good site practice in the relevant British and European Standards must be fully observed to ensure durable brickwork.

Bricks should be kept covered in storage and protected from inclement weather wherever possible. Newly constructed masonry should always be covered to protect cavities and prevent moisture saturation.

To avoid colour banding or patches within the finished brickwork it is important to ensure that bricks are always mixed from several packs, working vertically down the blades, not horizontally across the tops of the packs.

LEAD TIMES

The majority of our products are held in stock, some may be subject to a lead time depending on availability. Please check with our team when placing your order.

PACK SIZES

Pack sizes can vary, please confirm with our team when placing an order.

TECHNICAL SPECIFICATION

Always refer to our website for the most up to date technical details for each product.

www.imperialbricks.co.uk



TECHNICAL INFORMATION

COLLECTION

Our products can be collected from our depots at Tilbury, Liverpool or Shifnal. Please contact us and we will be happy to advise on the most suitable collection point for your requirements.

Please note that a collection reference must be issued prior to collection, which will need to be quoted at point of collection.

TILBURY

1 Rubb Shed
Tilbury
Essex
RM18 7EH

SHIFNAL

Grindle House Farm
Grindle Road
Grindle Near Shifnal
Shropshire
TF11 9JR

LIVERPOOL

Multi User Warehouse
Unit 4 Langton Park
Regent Road
Port of Liverpool
L20 1HA

DELIVERY

Full load sizes vary between 16/18/20 pallets depending on the brick type and size. We operate on a minimum load quantity of approximately 5,000 into London; smaller quantities and deliveries to other areas may incur a part-load charge from the haulier. Single pallet haulage is also available for smaller quantities.

Please ensure adequate site access and offload facilities are available.

Our team is always available to offer advice on the most appropriate delivery options for your requirements.



3" Handmade, Worcestershire



2½" Reclamation Cheshire, Nr Alderley Edge, Cheshire



SUSTAINABILITY

Our environmental impact is controlled at every stage of production to ensure our products are helping to build a more sustainable supply chain.

With carefully controlled use of natural resources, reuse of manufacturing waste products and the recycling of waste products from outside the process, we're doing everything we can to minimise the effect of our production on the environment.

We seek to continually improve our operations and activities by adopting best practice to prevent accidents and pollution, monitor and review our environmental impact and regularly assess for future improvements.

RAW MATERIALS

All our clay is extracted from licensed clay fields and from construction waste wherever possible.

RECYCLING OUR OWN WASTE PRODUCTS

We ensure any bricks damaged during manufacture or deemed to be of inferior quality are recycled back into the production process and that the water used to prepare our clay suspensions is recycled rather than wasted wherever possible.

RECYCLING OTHER'S WASTE PRODUCTS TOO

Working closely with suppliers, we continuously strive to develop new ways of incorporating materials such as recycled glass, paper and other waste products into manufacturing processes, ensuring that less of the planet's non-renewable resources are consumed and more of what would normally be thrown away is put to good use, without compromising the quality of our products.





MANUFACTURE



HANDMADE USING TIME-HONOURED METHODS

As experts in this field, we know the quality and character of a handmade brick cannot be mass-produced; it's the little imperfections created during the process that makes each brick unique.

To get a really special product takes real craftsmanship and our brickmakers have the skills and experience required to create superior products in the traditional way.

We make our handmade bricks using methods dating back to the 15th century.

THE MANUFACTURING PROCESS

- A 'clot' of roughly shaped clay is prepared and thrown by hand into a wooden mould dusted with dry, fine sand. Excess clay is removed with a wire bow and a flat wooden pallet is placed on top, with the mould being inverted to remove the brick.
- These bricks – known as 'green' bricks – are then stacked and left to air dry, creating the unique creases or 'smiles' on each brick face.
- The green bricks are then carefully stacked by hand into a coal fired kiln, where the temperature is gradually increased.
- The colour and texture of fired bricks depend on the minerals in the clay and kiln temperatures. Pink bricks contain more iron, while bricks with yellow tones are produced from clay with a higher lime content. As the kiln temperature increases, the bricks undergo a spectrum of changes; red bricks will darken to a purple tone, then turn brown or grey at around 1300°C.
- After firing, the bricks are cooled in the chamber before they are sorted, graded and packed ready for use in period renovations and traditional style new build projects.



68mm Yellow Stock, Isle of Man



68mm Olde Reclamation Clamp, Cheshire



Grindle House Farm, Grindle Road, Grindle, Near Shifnal, Shropshire, TF11 9JR
01952 750 816 • sales@imperialbricks.co.uk

www.imperialbricks.co.uk

