

Brought to you by [rooflights.com](https://www.rooflights.com)



Inspirational ideas for
your kitchen

Design that inspires



I'm always being asked what the latest 'in-thing' is to make a kitchen space extra special.

Kitchen design is like any other form of fashion: it's constantly changing and evolving in order to bring originality and style into the heart of the home. However there should always be a careful balance between style and functionality to deliver an impressive but practical living space for the entire family.

It's been great to work with Glazing Vision and rooflights.com; so many people underestimate the benefits of rooflights. Lighting can make or break a kitchen design so it's important to consider both task and ambient lighting. Make the most of natural light and always use LED lamps throughout – your rooflights should be designed alongside your kitchen, not as an afterthought.

This supplement offers an opportunity to look at some amazing spaces and explore current trends in kitchen design. We hope you enjoy it!

Lisa

Lisamelvindesign.co.uk





Will Pryce Photography / Andrew Mulroy Architects

The cost of purchasing a home in the UK continues to rise. According to the UK House Price Index (HPI), the average house price in the UK is £217,502 (as of February 2017). This demonstrates a 5.8% increase compared to the previous year. (Source: landregistry.data.gov.uk)

In London these figures are typically higher with HPI reporting an annual increase of 7.3% meaning the cost of buying a home in the capital will set you back a whopping £490,718 on average.

Add to this the cost of moving, stamp duty, valuation and legal fees, and - let's face it - the sheer stress involved, it's no wonder more and more people are choosing to develop their existing property, rather than look for a new one.

Buying a home in the capital will set you back a whopping £490,718.

We all live our lives very differently now and this is reflected in our homes. These days, homeowners are shunning traditional layouts in favour of open plan living and they are placing the kitchen/diner, or 'family room' as it's often referred to, at the heart of family living.

Modern communication methods and social media can leave us feeling isolated from our own family and loved ones, as our heads are constantly buried in our smart phones and tablet computers. That's why a communal family space that can be used for cooking, eating, watching TV or just hanging out together makes sense to many.

In this feature we'll look at the many different aspects of achieving a great design and help you spot some of the trends that interior designers and architects are following in order to get the most out of your space.

Budget

Once you've decided to improve your space then the most obvious place to start is with the budget, you may already have funds in place to complete the works or you could be considering a loan or re-mortgage in order to cover the costs. At this stage it's always a good idea to seek some advice from the professionals.

Before getting started, estate agents can offer expert advice about local ceiling prices for similar properties and what other homeowners have done to their own houses in order to maximise their investment.

Depending on how ambitious your project is, getting an architect or kitchen designer involved is always a good idea. Often they will come up with solutions and practical advice that you may never have considered, and they can help you stay within budget.

Houzz is the leading platform for home renovation and design, providing people with everything they need to improve their homes from start to finish - online or from a mobile device. They recently conducted a study with over 3,000 UK home owners who had completed a kitchen renovation project in the last 12 months; the results of this survey offer a fascinating insight into current trends.

Part of the study focussed on the typical amount spent on a kitchen project, with 30% of home owners spending between £10,000 - £25,000. Perhaps even more surprising is that 6% of those who completed the survey claimed to have spent over £75,000 on their kitchen renovation.

Whatever their budget, one constant amongst all of the participants was that a professional of some description was involved. Whether it was a tradesman, designer or fitter, 93% of participants all confirmed they 'hired a pro', so factor this into your budget from the offset.



30% of homeowners spend between £10,000 - £25,000.

Source: Houzz Kitchen Trends Study 2017

Space for the family

The growing demand for an adaptable, open-plan kitchen is primarily due to homeowners wishing for a living area that accommodates the entire family – a homework space for the children, a storage area for pet supplies, a place to cook and entertain guests, or simply a location to unwind.

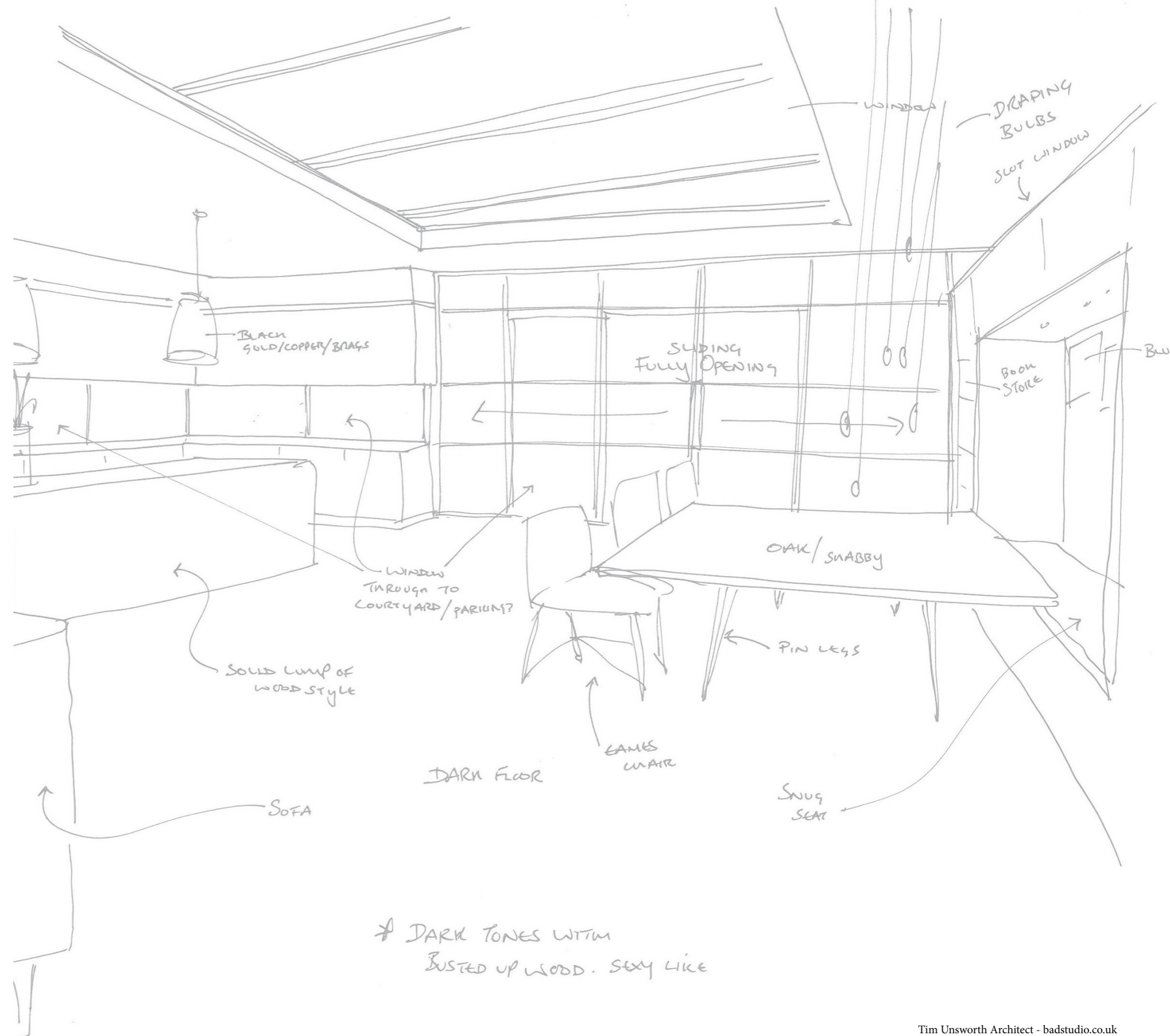
Ultimately, the best kitchen extensions are the ones that are adapted to your specific lifestyle needs. It's all very well creating a striking kitchen space but this will pose problems in the long run if it's not tailored to your family.

Work out your exact requirements before you move onto the specific design elements; how much storage do you need? Who will be using the space? How much of it is required for entertaining?

Knowing exactly who will be using the kitchen and for what purposes will help you to achieve your dream home.

Once you have a clear idea of how the kitchen will be used, you can then discuss the design aspects with the professionals. A kitchen designer can help you understand the trends, which elements need to be included, how to use the space to its full potential and which materials will stand the test of time.

The sketch to the right shows a few ideas you might want to include in a new kitchen design, and the next page has a list of design aspects to consider once you've mapped out your practical requirements.



Tim Unsworth Architect - badstudio.co.uk

The concept of a family room has certain dos and don'ts. As several people are likely to be using the space at the same time it's important to understand critical factors such as storage, not only for kitchen implements but also for the kids' toys or your collection of DVDs.

With an open plan space it's easy for 'stuff to migrate' and before you know it you end up with the dishes on the sofa and your tablet precariously balanced next to the sink!

Lighting and natural daylight are critical in such a large space, so plan your artificial lighting carefully with a combination of ambient and task lighting. Using glazing in the form of rooflights and bi-fold doors can dramatically transform internal spaces by harnessing natural daylight and in some cases assisting with natural ventilation.

Extraction is also another important thing to get right, keeping control of cooking smells and steam will make the space more usable and encourage others to gather whilst you're busy in the kitchen. Be careful not to select an excessively noisy extractor unit though as this will make it hard for someone else to watch TV or listen to music in the same room whilst you're cooking.



Andrew Beasley Photography / Granit Chartered Architects

Getting the details right

In this project the owners have used an entire wall to house an integrated book case for display and storage. The ultra-minimal kitchen space is juxtaposed with the more cosy seating and dining area.

Lighting is taken care of by a combination of flush-fitting spot down lighters and pendant lighting over the kitchen island. This, coupled with two fixed rooflights over the seating area and main food preparation area, ensure the space is adequately lit both day and night.

Colour

Palette





These minimalist white kitchens are brought to life by select use of vibrant coloured furniture and accessories.



Rachael Smith Photography

When it comes to modern colour palettes, a predominantly white kitchen still rules, with almost a third of people surveyed going for the crisp ultra-minimalist look. This can prove particularly effective with the most up to date flush fitting cabinetry, hidden appliances and composite work tops.

Taken too far though, an all-white finish can sometimes feel a little stark and cold. One of the best ways to combat this is the selective use of an accent colour to provide visual interest and break up the space. Using accent colours in your scheme can also help to zone areas in an open plan design.

Colour can be introduced in a variety of different ways by using furniture and accessories, colour coded utensils and kitchen gadgets or even artwork on the walls. One of the benefits of this approach is that it's quick and easy to update the overall look and feel of the room as the seasons or your mood changes.

If you're looking for an alternative to white but you still want to maintain a clean and contemporary colour scheme, using soft, muted colour palettes can work particularly well.

Charcoals, greys and neutral pastel colours have risen in popularity, these colour choices can feel very sophisticated and in many cases pull off the ultimate trick of making the kitchen look like it was more expensive than it actually was.

Today's most popular cabinet colours are white, grey and beige.

Source: Houzz Kitchen Trends Study 2017

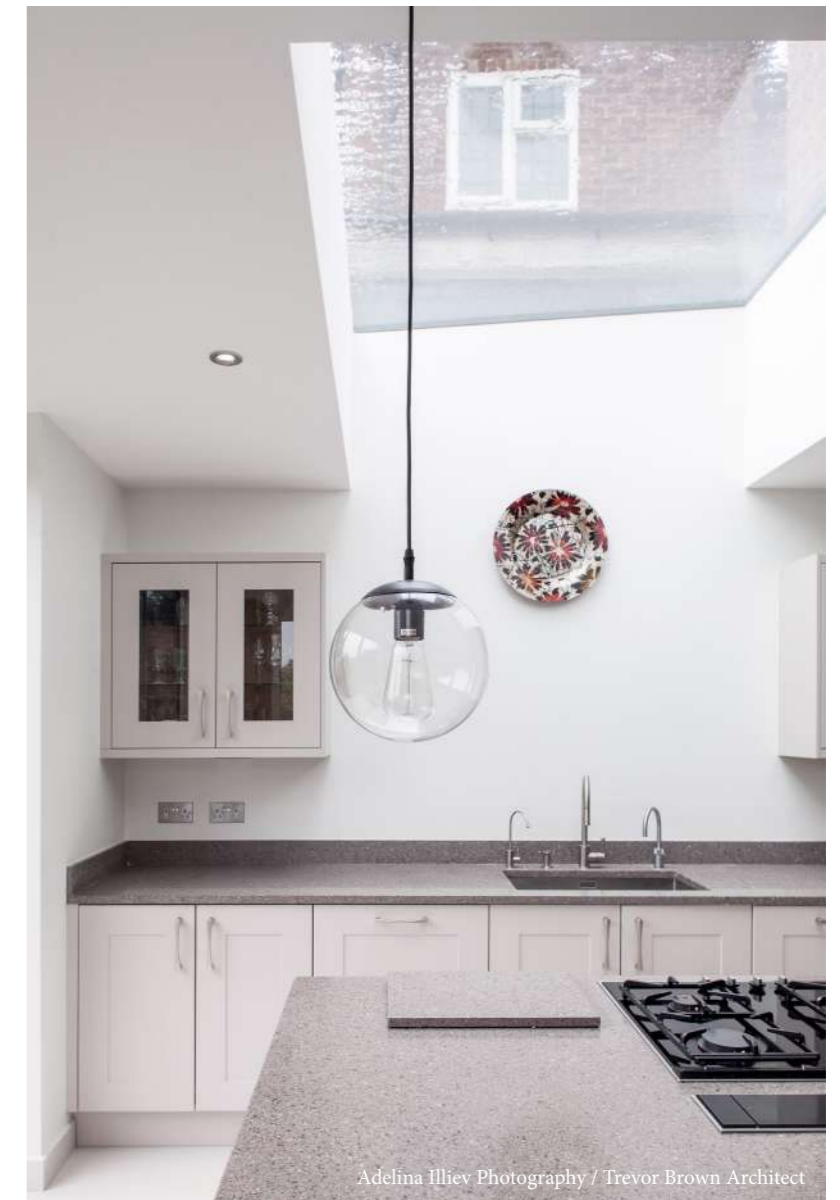


Muted colour schemes can work well in kitchen designs.



Modern kitchens perform multiple roles in the family. So they're the rooms which are most likely to require several different approaches to lighting, in order to ensure the space is sufficiently lit. Options range from direct under cabinet lighting for food preparation, to recessed spotlights in the ceiling for general lighting, to feature pendant lights to create mood and help to zone open plan spaces.

There is a mind boggling amount of different fixtures and fittings for interior lighting. Pendant lights continue to be the most popular choice for task lighting over kitchen islands and dining tables - these tend to be contemporary designs, often featuring industrial design elements using metals or glass.



Adelina Iliev Photography / Trevor Brown Architect

This project uses a combination of LED down lighters, feature task lighting and an overhead rooflight to provide suitable lighting for all occasions.

Light up your life

Go natural

Natural daylight is an important part of any design scheme and, in most cases, the more natural light you can incorporate, the better.

Studies have found that natural light can boost your mood, make you more productive and reduce stress. It's also a low-energy and cost-effective way to keep your interior illuminated during the day.

Historically window options for kitchen design have been pretty conservative. Many of us grew up in homes with a traditional layout, including a window situated over the kitchen sink. This type of set up can still work very well, particularly if you're lucky enough to benefit from a beautiful garden or outstanding view. But design trends move on, and you now have more options to increase the amount of natural daylight and make the most of your views if you have them.

Pictured right, we have a typical high-end kitchen extension to a period property. One of the challenges with these types of schemes is that they create long, often narrow spaces. Where these properties are part of a terrace, options are limited for the placement of traditional windows.

In this case, the client has opted to install a 'frameless' fixed rooflight overhead, providing a clean, minimal appearance and plenty of natural daylight in the high-use areas.



Installing rooflights is an effective way to boost natural daylight.



This renovation demanded a large amount of storage, which in turn limited the options for window placement due to the number of wall-mounted cabinets installed. However, they have very cleverly installed narrow window apertures between the cabinet tops and ceiling, using what is normally 'dead space' as an effective means of harnessing natural daylight. This is also a contemporary design feature that complements the modern, fresh look and feel of the space.

To maximise views of the beautifully landscaped garden, a large section of glazing has been installed which wraps around the corner of the building. The design also allows for a bespoke window seat that provides a great reading and relaxing spot.

Externally the use of vibrant colour isolates the glass as a design feature and adds modernity helping to identify the new extension within the context of the building.



Effective ventilation

The purpose of designing a large family space is to encourage everyone to spend more time together, so making the area as comfortable as possible is key.

The last thing you want is to be preparing the Sunday roast on your own, as the kitchen area fills up with steam and cooking smells. Effective extraction is crucial but these days you're not limited to just a traditional cooker hood.

The design pictured left cleverly uses a kitchen extractor manufactured from glass and stainless steel which doubles as a lighting feature. This unit provides a focal point in the room and allows placement of the hob in the central kitchen island without compromising the overall design.

The al fresco experience

Thinking outside the box, there are other ways of ventilating your cooking area which can radically change a kitchen family space into something far more dramatic.

In this scheme, the architect has specified a bespoke sliding glass rooflight, which allows the entire ceiling space above the kitchen to open up at the touch of a button.

Imagine the look on your friends' faces when your rooflight begins to retract allowing everyone to enjoy an 'al fresco' dining experience without even leaving the house.



If you have a garden or outdoor space, installing a set of doors in your family room is more popular than ever. They can improve the flexibility of your layout by bringing the outdoors in, vastly increasing natural daylight and allowing the outside space to be visible from indoors. Great if you have kids or pets that need to be kept an eye on.

In most modern conversions, the more traditional wooden framed French doors have given way to contemporary bi-fold doors with larger expanses of glazing and extruded aluminium frames.

The latest designs offer a tremendous amount of scope ranging from conservatively specified 2-4 leaf openings, to entire corner units leaving the impression that the entire building fabric is 'floating' without any means of support.

Bring the outside in





This project truly makes the most out of a contemporary bi-fold door install by ensuring that flooring materials are identical both inside and out. The finish and levels are so precise that it's hard to tell where the building fabric ends and the patio area begins.



The design of the sliding doors on this project has resulted in a floating-building effect. This visual masterpiece was made possible by clever engineering and purity of design.

Sliding glazed sections on each aspect meet at the corner and lock together. Although a more expensive option than a standard set of bi-fold or French doors, this level of finish is still available off the shelf from the manufacturers.

**A visual masterpiece
made possible by clever
engineering and purity of
design.**



When embarking on a major kitchen renovation, it's only natural to want to inject some personal style into the space.

A kitchen and family room can say a lot about your lifestyle and living habits, so style-conscious homeowners are spending big bucks to get the right look.

When it comes to modern kitchens, contemporary is king, while traditional and country-style kitchens have fallen in popularity.

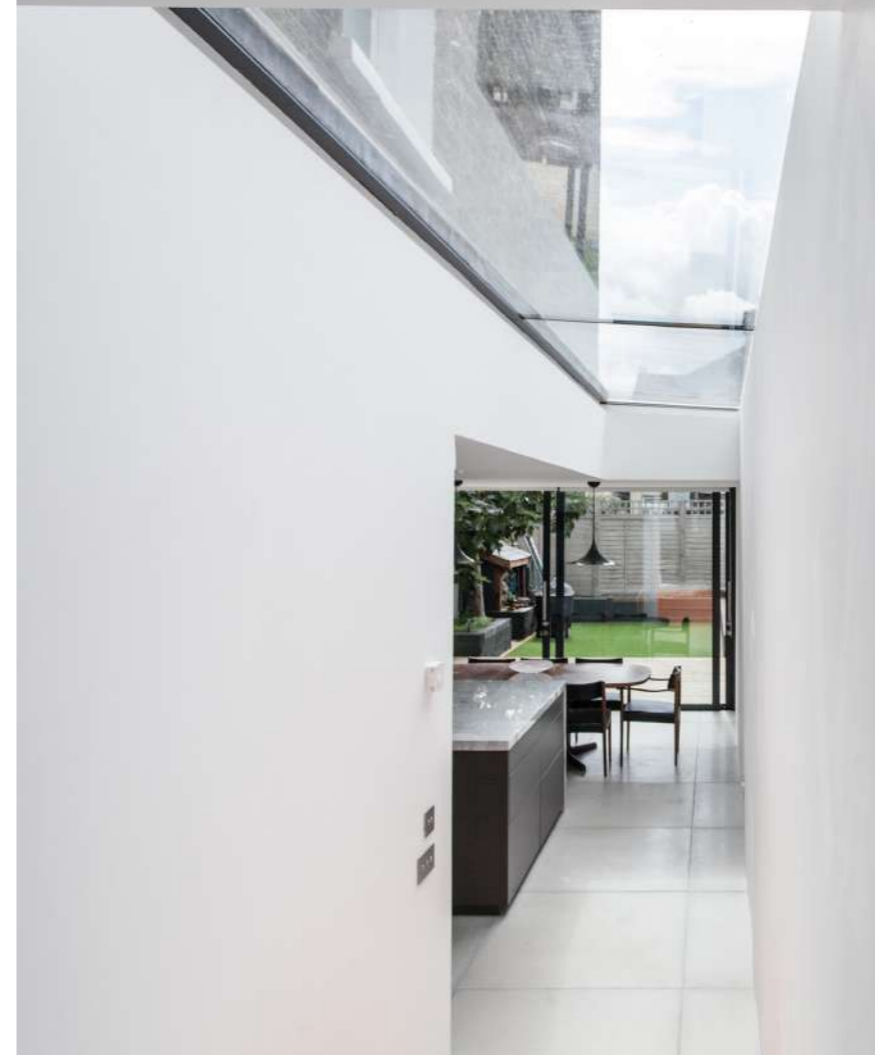
The industrial kitchen style was very popular in the early noughties thanks to its bold and assertive finishes. An updated version of this style features a softened look. The right details - such as stainless steel and concrete finishes and an accent colour palette provided by accessories and plants - can help create an industrial look that is striking and confident, as well as on-trend.

In this project, a large glass rooflight was used to bring much needed natural daylight into the space, which could have otherwise become too dark with the muted finishes.





Difficult spaces



In older period properties you will often encounter problem spaces that are difficult to incorporate into your design, be it an odd shape, a hard-to-access area or simply an overly dark space. Sometimes a little more thought is required to make the best use of these areas.

Additional storage is always a good idea as there is a plethora of options available to provide storage for pots and pans, tins, jars and things best hidden away such as the kids' muddy shoes.

In this project the architect has managed to squeeze in a large book case in the corridor meeting the new kitchen space. Thanks to the large modular glass rooflight overhead, the tight space has maintained a light and airy appearance.

Island living

According to Houzz, over 40% of those surveyed opted to include a kitchen island as part of their renovation.

Installing an island maximises worktop space and storage, which would have previously just been unused floor space.

You can have practically anything integrated into your kitchen island, provided you plan accordingly. For example, plumbing and drainage will be needed if you plan to have a sink installed. Or if you're considering locating your cooker in a kitchen island, ensure that adequate electrics are planned in, as well as ventilation or extraction.

Pictured right, useful plug sockets neatly fitted underneath this island, meaning you can plug in all your kitchen gadgets or even a laptop to help the kids do their homework.



The choice of which flooring materials to use in your family room is critical.

As a multi-use space the flooring finish should be expected to withstand harsh treatment and be suitable for a variety of different situations.

It will need to be hard wearing and robust but still comfortable to walk on and not feel overly stark or cold. It should be easy to clean but require little maintenance to keep it watertight. It will also need to be the right colour in order to maximise a feeling of light and space without showing up every mark or blemish.

Depending on your layout, using a combination of different materials is usually a very effective way of zoning a space. As well as providing a visual indication to the different areas, the most suitable materials can be used to improve function.

For example, the project featured here uses tiling in the main kitchen galley space but switches to wooden flooring in the dining and social areas.

Although hardwood or engineered wooden floors have become more popular, the majority of homeowners are still opting for a ceramic or porcelain tiled floor, due to their versatility and seemingly endless array of finishes.

Stone and polished concrete are favoured by those looking for a minimalist finish - done right, this can provide a striking feature with a unique appearance.

Despite the importance of performance, it seems that homeowners are predominantly motivated by look and feel when selecting flooring. According to the Houzz report, only half of those surveyed cited “easy to clean” as their reason for purchase.



Fantastic flooring

Flooring purchase motivations

- 84% Look and feel
- 66% Durability
- 53% Easy to clean/sanitise

Source: Houzz Kitchen Trends Study 2017

Polished concrete flooring is favoured by those looking for a minimalist finish.





Worktops & cabinetry

Kitchen cabinetry has become more and more refined. It is typically found in one of two styles; either simple Shaker style doors with muted colour finishes, or ultra-minimalist with a high-gloss finish, often in bold colours to act as an accent within the rest of the design.

Solid wood remains enduringly popular with country style kitchens but even these have succumbed to the latest contemporary aesthetic.

The choice of worktop tends to be more wide ranging, but granite finishes have long been the most popular choice - and they can be real or artificial. While the natural material is favoured by many people, others argue that granite-look worktops are actually far more practical for day-to-day use, since real granite can be prone to staining if liquids are left to settle.

There are many modern composite materials available too. These offer a sleek modern look but can withstand the battering that a kitchen worktop inevitably takes.

When choosing worktop materials and cabinetry, remember to consider practicality for your family as well as aesthetics.

If you have young children, a material that marks easily such as glass is not ideal.

If you like cooking, consider a heat-resistant material such as granite around your hob, so that you can move hot pans off the heat and onto the worktop, without causing damage.

If hygiene is a concern, think about antibacterial materials such as stainless steel. Remember that steel will scratch over time, creating a worn patina that some love - but if you want a pristine worktop, it might not be the right choice for you.

High-tech kitchen appliances continue to gain popularity. Colour touchscreens and wireless control are increasingly common features in modern kitchens as the 'internet of things' allows us to connect more and more gadgets in our homes.

When re-modelling the kitchen, homeowners often choose to integrate traditional white goods in a way that hides them from views. Usually, the items that remain on display feature stainless steel or gloss black finishes.

New cookers are still a favourite part of an upgraded kitchen and they serve as the central hub of any good family room. The type of unit you go for will depend to a certain extent on available services such as gas or electric. While large range-type cookers are still lusted after in high-spec kitchens, some homeowners are also seeking out alternatives such as large-capacity ovens, double ovens and ovens with sous-vide functionality.

Pictured right, a traditional country-style range cooker with modern induction hob by Everhot.



Appliances

Top new cooker types

- 40% Induction
- 31% Gas
- 18% Gas/Electric
- 12% Electric

Source: Houzz Kitchen Trends Study 2017

Trendy kitchen checklist



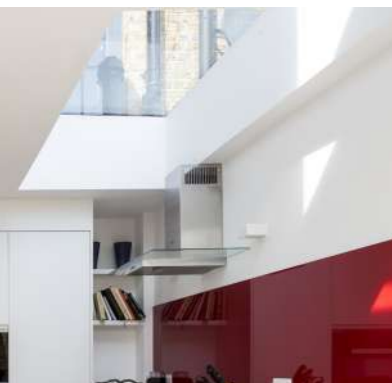
1. Feature wall finishes

An exposed brick wall can add warmth and drama to a room. Or why not consider brick weave tiling? No longer confined to NYC apartment bathrooms, we're glad to report this beautiful tile pattern has taken up residence in UK kitchens and it's a style that's here to stay.



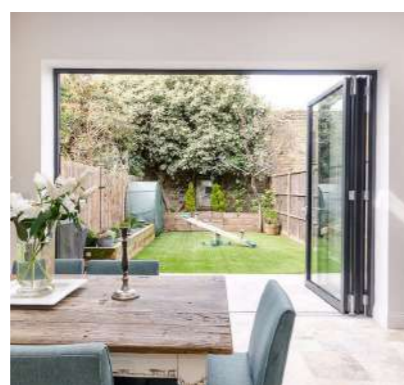
2. Integrated book case

Print is dead right? Not from what we've seen. But if books aren't your thing, the shelves are great for storing DVDs, knick-knacks and glassware. Don't cram too much in though or it will look cluttered and messy.



3. Underfloor heating

British homes were once compartmentalised to make heating them easier. But now we have underfloor heating, family areas can be opened up and kept warm, without having to worry about radiators taking up valuable wall space.



4. Industrial lighting

Think back in horror to the fluorescent strip lights your parents used to have and breathe a sigh of relief as you polish your copper pendant light. Contemporary kitchen lighting comes in a variety of designs and the industrial style - with plenty of metal and glass - is a popular choice.

5. Retro furniture

Raid your nan's house and make her an offer she can't refuse. Furniture from the 1960s and 70s has never been more fashionable and, when combined with modern finishes, these statement pieces can help create the highly sought after retro-chic look.

6. Glass rooflight

Rooflights are awesome, boost natural daylight and make your family room a nicer place to be. Great when the sun is shining, and equally as entertaining when its raining.

7. Comfy seating

Nobody wants to be uncomfortable - so make your family room somewhere everyone wants to be with some great furnishings. If there's a space for a squishy sofa and a recliner, use them. Add a big TV, and before you know it, you'll be shouting at the kids for watching too much Netflix.

8. Bi-fold/sliding doors

A must have for kitchen extensions that open out to a garden, these can give you a big boost of natural daylight, while helping your whole family to connect with the outdoors - without having to get off the sofa.

9. Contemporary design

Not to be confused with modernist. Contemporary is simply a design concept that refers to 'of the now', and it can be used to combine finishes, furniture and objects from any defined period into one eclectic mix.

10. Professional cooker

Whether it's a traditional range cooker or a bank of eye-line ovens. You may only have time to heat up baked beans for most of the week, but on Sunday morning when you're staring down at the business end of a family roast with all the trimmings, you'll be glad you have seven hobs, two ovens and a plate warmer.

We did it!

A family space for the Golders

Suzanne and Mark Golder bought their home back in 2005. In the 12 years since then, the couple has added two children and two dogs to the family. This, together with their shared passion for cycling (complete with an ever growing mountain of cycling equipment), left them feeling they'd outgrown the space.

While moving house was an option, the Golders ultimately decided that their current location was perfect, thanks to its good schools, green spaces and lovely community feel. Also, the cost of buying a new home seemed excessive - especially since they wanted plenty of space for family life and entertainment.

Instead of moving, Suzanne and Mark chose to extend the rear of the property and reconfigure the layout to make the most of the space they had available.

Two children, two dogs and an ever-growing mountain of cycling equipment left them feeling they'd outgrown the space.



Golders House
BOOT ROOM
Dirty Bikes + Wet Dogs

The kitchen, utility, cloakroom and current office in the rear part of the garage were re-arranged to create a large kitchen and family space. The building work also enabled them to create a boot room large enough for indoor bike training, a downstairs shower room, an office and plenty of bicycle storage space in the garage.

Roof windows were installed on the extension's pitched roof to help lighten up the space. An on-site carpenter built a window seat into the downstairs bay window, providing seating for two at the dining table. A bench at the other end provided additional seating, so the family can comfortably fit up to ten people at meal times.

The Golders worked with project managers Resolution Property Group and architect Bradbury Design to plan the new space. Kitchen designer Lisa Melvin was also involved in the project - she helped to ensure everything on the family's wish-list was incorporated and provided invaluable advice on creating a family area that would be beautiful, as well as practical.

"A working family is a constant juggling act, and Lisa helped us identify clever solutions to make life easier," Suzanne explained. "This included a breakfast area for busy mornings to get the family out to school and work. In the evening, the children can use the space to do their homework while I cook dinner."

Thanks to Lisa's input, the couple was able to combine Suzanne's preference for traditional style with Mark's desire for high-spec finishes.

Mark cooks the Sunday roast and was adamant he wanted an eye-line oven.

"Mark cooks the Sunday roast and was adamant that he wanted an eye-line oven. I had always wanted a range and cook the remaining six days of the week. Thanks to Lisa's help we were able to blend our requirements and give us both what we wanted," Suzanne explained.

10 top tips for a pain free build.

1. Get professional advice at the beginning.
2. Have a contingency plan and budget.
3. Keep your pets away from the project area.
4. Prepare for dust.
5. Leave clear instructions for trades.
6. Stock up on tea and sugar - builders like a cuppa.
7. Stand by design decisions, but prepare to make decisions on site.
8. Spend time getting the details right.
9. Use a snagging list throughout the build.
10. Take before and after pictures.



What we spent

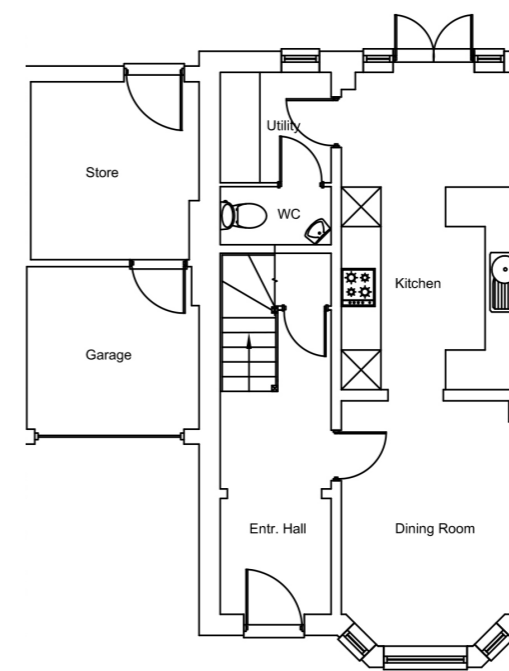
Structural building work	£25,000
Kitchen and boot room	£23,000
Furniture and decorating	£8,000
Plumbing	£6,500
Electrics	£5,000
Garden and garage update	£5,000
Project management	£4,500
Shower room	£3,000
Flooring materials and labour	£2,500
Architects fees and planning	£1,700
Total	£84,200

Build time
21 weeks including snagging and decorating.

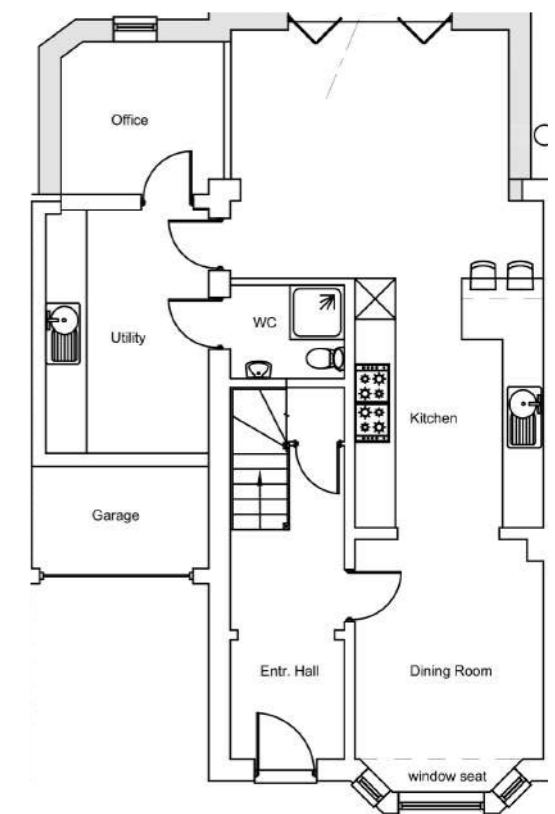
We gained
2 rooms and an extra 296 sq/ft

Thanks to
Bradbury Architects
Lisa Melvin Design
Resolution Property Group

Below and right: The new extension allows more room for a family space and includes larger utility area, shower and home office, plus space for the bikes too.



before



after

The inspirational projects shown throughout this feature are included to help fuel your own renovation ideas. We would like to thank all of the architects, photographers and clients for their help in bringing these stunning projects to life and for sharing their experiences and pictures.

Remember that getting the best results and value from your new kitchen space requires careful planning from the very beginning.

While aesthetics are important, so is practicality. A kitchen design should not only look great; it also needs to function in the best way possible.

Try to separate the space into individual zones and consider how each of these areas will subtly flow into each other. By creating these zones, you'll be able to determine how the kitchen is used every day, and ensure that it meets the needs of each family member.

Finally, don't forget to have fun with your new kitchen design. A few bright colours, glazing that brings the outdoors in and unique finishing touches will all help create a space that's both practical, and which your family can enjoy spending time in for many years to come.



Sit back and relax

Thanks to:

Adelina Illiev Photography
Andrew Beasley Photography
Andrew Mulroy Architects
Andy Matthews Photography
Architecture: WK - Sam Kamleh
Badstudio - Tim Unsworth
Chadwick Dryer Clarke Studio Architects
Design Cubed Architects
Eldridge Smerin Architects
Granit Chartered Architects
Joel Knight Photography
Lisa Melvin Design
Rachael Smith Photography
Richards & Warren Architects
Simon Maxwell Photography
Soup Architects
Suzanne and Mark Golder
Tim de Graag Architect (Netherlands)
Tony Timmington Photography
Trevor Brown Architect
Will Pryce Photography

Data provided by:

Houzz Kitchen Trends Study 2017
2017 UK House Price Index

rooflights.com is a division of **GLAZING
VISION**

Glazing Vision are technical experts in the design, manufacture and supply of precision engineered, architectural glass rooflights for residential and commercial buildings.

rooflights.com features a selection of the most popular Glazing Vision rooflights available off the shelf with next day delivery.

Glazing Vision Ltd, Saw Mills Road, Diss, Norfolk, IP22 4RG
01379 658300 info@glazingvision.co.uk